

AUGUST 1999

6202.2



LABOUR FORCE

VICTORIA

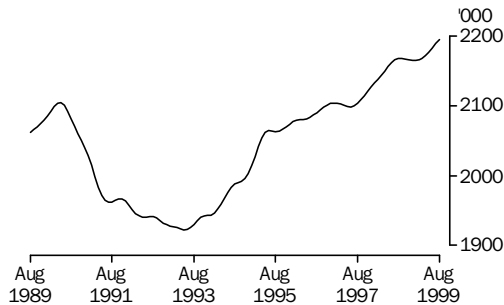
EMBARGO: 11.30AM (CANBERRA TIME) WED 13 OCT 1999

SUMMARY OF FINDINGS

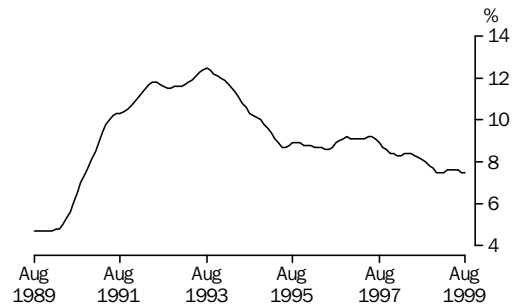
Employment

The trend estimate of employed persons in Victoria rose strongly between May 1993 and June 1995, increasing by 142,600 to 2,064,800 over that period. During the next eighteen months growth slowed with the trend estimate reaching 2,104,100 in January 1997. Higher growth in the trend estimate was again recorded from June 1997, with a high of 2,168,200 being reached in August 1998. The trend has now risen to 2,195,200 in August 1999.

EMPLOYED PERSONS: TREND SERIES, VICTORIA



UNEMPLOYMENT RATE: TREND SERIES, VICTORIA



Unemployment

From a high of 12.5% in August 1993, the trend unemployment rate fell rapidly to 8.7% by May 1995. The trend then remained steady until September 1996, when it rose to 9.0%. It remained above 9.0% until August 1997, then fell to 8.3% in January 1998. After a rise of 0.1% in early 1998 the trend declined to 7.5% in December 1998 and was 7.5% in August 1999.

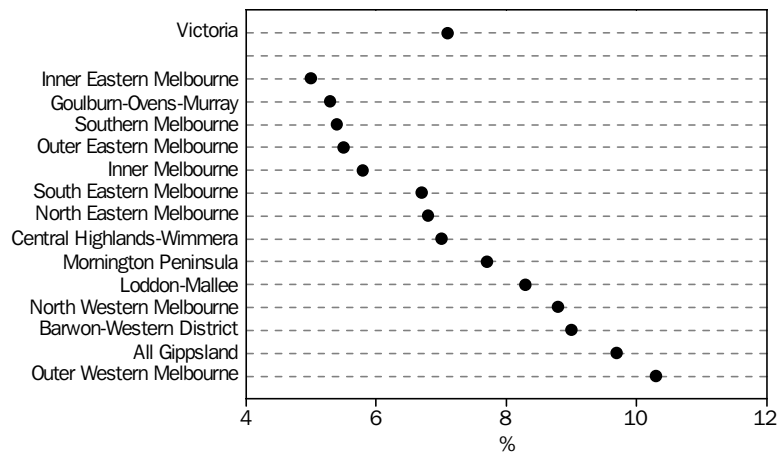
INQUIRIES

- For further information about these and related statistics, contact Client Services on (03) 9615 7677 or any ABS office shown on the back cover of this publication.
-

Regions

In August 1999, the regions inside the Melbourne Major Statistical Region with the highest unemployment rates (original series) were Outer Western Melbourne (10.3%) and North Western Melbourne (8.8%). The regions outside the Melbourne Major Statistical Region with the highest unemployment rates were All Gippsland (9.7%) and Barwon-Western District (9.0%). The lowest unemployment rate recorded in any region in August 1999 was 5.0% in Inner Eastern Melbourne.

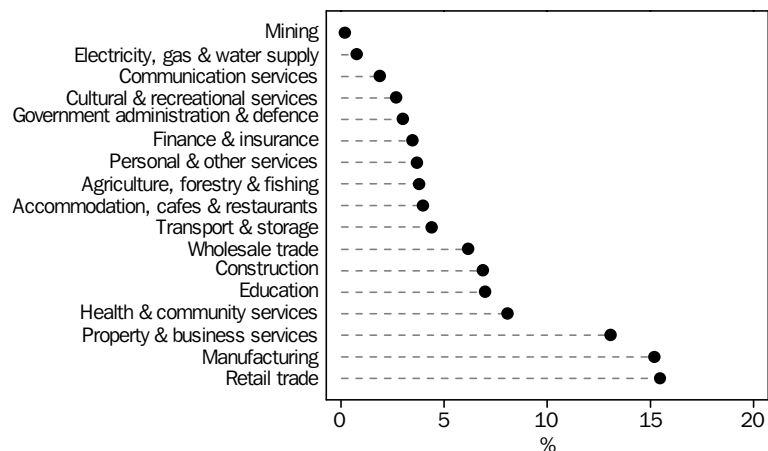
UNEMPLOYMENT RATES: ORIGINAL SERIES, LABOUR FORCE REGIONS, VICTORIA, AUGUST 1999



Industry

The two largest industries in Victoria with respect to employment are Retail trade (336,700 employed) and Manufacturing (331,200 employed). Together these industries accounted for 30.7% of all employed persons in Victoria in August 1999. Property and business services, and Health and community services were the next largest, with 285,800 and 177,100 employed, respectively.

DISTRIBUTION OF EMPLOYED PERSONS BY INDUSTRY: ORIGINAL SERIES, VICTORIA, AUGUST 1999



CONTENTS

		Page
	Summary of findings	1
TABLES		
Civilian population aged 15 years and over	1 Labour force status, time series, original series	4
	2 Labour force status, time series, seasonally adjusted series	5
	3 Labour force status, time series, trend series	6
	4 Labour force status, age, and attendance at an educational institution, August 1999	7
	5 Labour force status and relationship in household, August 1999	8
	6 Labour force status, birthplace, and period of arrival in Australia, August 1999	10
	7 Labour force status by regions, June 1999	11
	8 Labour force status by regions, July 1999	12
	9 Labour force status by regions, August 1999	13
	10 Labour force status and age by regions, August 1999	14
Employed persons	11 Industry and occupation by age, August 1999	18
	12 Industry and occupation by marital status, August 1999	19
	13 Average weekly hours worked by industry and occupation, August 1999	20
	14 Status in employment and average weekly hours worked, August 1999	21
Unemployed persons	15 Industry and occupation of last job, August 1999	21
	16 Duration of unemployment, August 1999	22
INFORMATION		
	Explanatory notes	23
	Glossary	32
	A Standard errors of estimates, from September 1997	34
	B Standard errors of estimates of monthly movements, for October to November 1997 onwards	35
	C 25% Relative Standard Error cut off levels, States and Australia, from September 1997	36
	Supplementary and Special Surveys Relating to the Labour Force	36
	Local Government Area (LGA) Composition of Statistical Regions, Victoria, from September 1997	37
MAPS		
	Victoria, labour force regions and local government areas, September 1997	38
	Melbourne Major Statistical regions and local government areas, September 1997	39
GRAPHS		
	Employed persons: trend series, Victoria	1
	Unemployment rate: trend series, Victoria	1
	Unemployment rates: original series, labour force regions, Victoria, August 1999	2
	Distribution of employed persons by Industry: original series, Victoria, August 1999	2

**TABLE 1. CIVILIAN POPULATION AGED 15 YEARS AND OVER BY
LABOUR FORCE STATUS, VICTORIA: ORIGINAL SERIES**

Month	Employed		Unemployed			Labour force (<i>'000</i>)	Civilian Not in population labour 15 years force and over		Unemp- loyment rate (%)	Partici- pation rate (%)
	Full-time	Total	Full-time	Part-time	Total		force	and over		
	(<i>'000</i>)	(<i>'000</i>)	(<i>'000</i>)	(<i>'000</i>)	(<i>'000</i>)		(<i>'000</i>)	(<i>'000</i>)		
MALES										
<i>1998-</i>										
June	1,052.4	1,218.1	92.6	12.4	105.0	1,323.2	487.8	1,810.9	7.9	73.1
July	1,059.9	1,217.4	89.3	13.7	103.0	1,320.5	492.4	1,812.8	7.8	72.8
August	1,050.0	1,206.8	87.4	16.5	103.9	1,310.8	504.0	1,814.8	7.9	72.2
September	1,073.4	1,236.2	88.0	18.5	106.5	1,342.7	474.0	1,816.7	7.9	73.9
October	1,062.5	1,218.4	81.4	17.5	98.9	1,317.3	501.9	1,819.2	7.5	72.4
November	1,056.5	1,218.9	83.3	13.9	97.2	1,316.1	505.5	1,821.6	7.4	72.3
December	1,076.5	1,237.3	80.7	19.3	100.0	1,337.3	486.8	1,824.1	7.5	73.3
<i>1999-</i>										
January	1,061.1	1,219.8	89.0	17.0	106.0	1,325.9	500.4	1,826.2	8.0	72.6
February	1,085.5	1,231.2	94.5	16.2	110.7	1,341.9	486.5	1,828.4	8.2	73.4
March	1,083.1	1,238.3	81.9	17.1	99.0	1,337.4	493.2	1,830.5	7.4	73.1
April	1,065.9	1,229.7	91.6	19.7	111.3	1,341.0	491.9	1,832.9	8.3	73.2
May	1,062.5	1,220.4	88.8	21.9	110.7	1,331.1	504.2	1,835.3	8.3	72.5
June	1,072.6	1,248.4	87.4	11.5	98.8	1,347.2	490.4	1,837.7	7.3	73.3
July	1,082.6	1,243.2	80.7	14.8	95.5	1,338.7	501.3	1,840.0	7.1	72.8
August	1,072.4	1,225.7	80.3	18.1	98.4	1,324.2	518.2	1,842.3	7.4	71.9
FEMALES										
<i>1998-</i>										
June	524.3	945.7	53.1	30.8	83.9	1,029.6	862.8	1,892.3	8.1	54.4
July	536.9	944.8	54.0	29.0	83.0	1,027.8	866.5	1,894.3	8.1	54.3
August	537.9	954.2	50.4	31.0	81.4	1,035.7	860.6	1,896.3	7.9	54.6
September	535.2	957.8	58.2	32.0	90.2	1,048.0	850.2	1,898.2	8.6	55.2
October	530.6	942.7	47.3	27.1	74.4	1,017.2	883.4	1,900.6	7.3	53.5
November	520.1	941.0	49.8	27.2	77.0	1,017.9	885.0	1,902.9	7.6	53.5
December	543.7	954.0	48.4	27.0	75.4	1,029.4	875.9	1,905.3	7.3	54.0
<i>1999-</i>										
January	533.9	915.4	52.2	24.0	76.2	991.6	915.7	1,907.2	7.7	52.0
February	531.6	929.5	54.6	32.1	86.7	1,016.2	893.0	1,909.2	8.5	53.2
March	525.8	936.6	48.1	32.2	80.3	1,016.9	894.3	1,911.2	7.9	53.2
April	520.0	936.8	45.6	28.2	73.8	1,010.6	902.9	1,913.5	7.3	52.8
May	520.3	940.0	43.5	28.0	71.5	1,011.5	904.4	1,915.9	7.1	52.8
June	523.6	951.8	44.5	25.1	69.6	1,021.4	896.8	1,918.2	6.8	53.2
July	542.5	963.3	38.6	35.3	73.9	1,037.2	883.4	1,920.6	7.1	54.0
August	527.8	953.3	38.4	29.0	67.4	1,020.6	902.3	1,922.9	6.6	53.1
PERSONS										
<i>1998-</i>										
June	1,576.7	2,163.8	145.7	43.2	188.9	2,352.7	1,350.5	3,703.2	8.0	63.5
July	1,596.8	2,162.2	143.3	42.7	186.0	2,348.3	1,358.9	3,707.1	7.9	63.3
August	1,587.9	2,161.1	137.8	47.5	185.4	2,346.4	1,364.6	3,711.0	7.9	63.2
September	1,608.6	2,194.1	146.2	50.4	196.6	2,390.7	1,324.2	3,714.9	8.2	64.4
October	1,593.0	2,161.1	128.7	44.6	173.3	2,334.5	1,385.3	3,719.7	7.4	62.8
November	1,576.6	2,159.8	133.1	41.1	174.2	2,334.1	1,390.5	3,724.5	7.5	62.7
December	1,620.2	2,191.3	129.2	46.3	175.4	2,366.7	1,362.6	3,729.4	7.4	63.5
<i>1999-</i>										
January	1,595.0	2,135.2	141.2	41.0	182.2	2,317.4	1,416.1	3,733.5	7.9	62.1
February	1,617.1	2,160.8	149.1	48.3	197.4	2,358.1	1,379.5	3,737.6	8.4	63.1
March	1,609.0	2,175.0	130.0	49.3	179.3	2,354.3	1,387.5	3,741.8	7.6	62.9
April	1,585.9	2,166.6	137.3	47.8	185.1	2,351.6	1,394.8	3,746.5	7.9	62.8
May	1,582.8	2,160.3	132.3	49.9	182.2	2,342.6	1,408.6	3,751.2	7.8	62.4
June	1,596.2	2,200.2	131.9	36.6	168.4	2,368.6	1,387.3	3,755.9	7.1	63.1
July	1,625.1	2,206.5	119.4	50.1	169.4	2,375.9	1,384.6	3,760.6	7.1	63.2
August	1,600.2	2,179.0	118.7	47.1	165.8	2,344.8	1,420.5	3,765.3	7.1	62.3

**TABLE 2. CIVILIAN POPULATION AGED 15 YEARS AND OVER BY
LABOUR FORCE STATUS, VICTORIA: SEASONALLY ADJUSTED SERIES**

<i>Month</i>	<i>Employed (‘000)</i>	<i>Unemployed (‘000)</i>	<i>Labour force (‘000)</i>	<i>Unemployment rate (%)</i>	<i>Participation rate (%)</i>
MALES					
<i>1998-</i>					
June	1,218.4	107.8	1,326.2	8.1	73.2
July	1,218.9	108.5	1,327.4	8.2	73.2
August	1,218.3	106.1	1,324.4	8.0	73.0
September	1,237.5	102.6	1,340.2	7.7	73.8
October	1,219.8	102.3	1,322.1	7.7	72.7
November	1,218.7	101.5	1,320.2	7.7	72.5
December	1,218.9	100.9	1,319.8	7.6	72.4
<i>1999-</i>					
January	1,222.8	99.1	1,321.9	7.5	72.4
February	1,232.6	101.4	1,334.0	7.6	73.0
March	1,240.0	96.3	1,336.3	7.2	73.0
April	1,229.3	115.1	1,344.4	8.6	73.3
May	1,217.1	112.2	1,329.3	8.4	72.4
June	1,248.7	101.4	1,350.1	7.5	73.5
July	1,244.8	100.6	1,345.4	7.5	73.1
August	1,237.4	100.6	1,338.0	7.5	72.6
FEMALES					
<i>1998-</i>					
June	938.8	87.9	1,026.7	8.6	54.3
July	939.4	89.2	1,028.5	8.7	54.3
August	958.7	86.6	1,045.3	8.3	55.1
September	943.4	87.7	1,031.1	8.5	54.3
October	942.3	79.6	1,021.9	7.8	53.8
November	939.1	80.7	1,019.8	7.9	53.6
December	942.6	74.0	1,016.6	7.3	53.4
<i>1999-</i>					
January	942.9	73.0	1,015.9	7.2	53.3
February	941.0	76.9	1,017.9	7.6	53.3
March	938.8	74.8	1,013.6	7.4	53.0
April	933.0	72.2	1,005.2	7.2	52.5
May	938.4	73.7	1,012.1	7.3	52.8
June	944.6	73.0	1,017.7	7.2	53.1
July	958.1	79.5	1,037.6	7.7	54.0
August	957.6	71.5	1,029.1	6.9	53.5
PERSONS					
<i>1998-</i>					
June	2,157.2	195.7	2,352.9	8.3	63.5
July	2,158.2	197.7	2,355.9	8.4	63.6
August	2,177.0	192.8	2,369.8	8.1	63.9
September	2,181.0	190.3	2,371.3	8.0	63.8
October	2,162.0	181.9	2,344.0	7.8	63.0
November	2,157.8	182.2	2,340.0	7.8	62.8
December	2,161.5	174.9	2,336.4	7.5	62.6
<i>1999-</i>					
January	2,165.7	172.1	2,337.8	7.4	62.6
February	2,173.6	178.3	2,351.9	7.6	62.9
March	2,178.8	171.1	2,349.9	7.3	62.8
April	2,162.3	187.3	2,349.6	8.0	62.7
May	2,155.5	185.9	2,341.4	7.9	62.4
June	2,193.4	174.4	2,367.8	7.4	63.0
July	2,202.9	180.1	2,383.0	7.6	63.4
August	2,195.0	172.1	2,367.2	7.3	62.9

**TABLE 3. CIVILIAN POPULATION AGED 15 YEARS AND OVER BY
LABOUR FORCE STATUS, VICTORIA: TREND SERIES**

<i>Month</i>	<i>Employed</i> (<i>'000</i>)	<i>Unemployed</i> (<i>'000</i>)	<i>Labour force</i> (<i>'000</i>)	<i>Unemployment</i> <i>rate</i> (%)	<i>Participation</i> <i>rate</i> (%)
MALES					
<i>1998-</i>					
June	1,220.4	109.2	1,329.6	8.2	73.4
July	1,222.2	107.6	1,329.7	8.1	73.4
August	1,222.8	105.7	1,328.5	8.0	73.2
September	1,222.7	103.9	1,326.6	7.8	73.0
October	1,222.4	102.2	1,324.7	7.7	72.8
November	1,223.0	100.7	1,323.7	7.6	72.7
December	1,223.9	100.1	1,324.0	7.6	72.6
<i>1999-</i>					
January	1,225.3	100.7	1,326.0	7.6	72.6
February	1,227.4	102.4	1,329.8	7.7	72.7
March	1,230.1	104.3	1,334.3	7.8	72.9
April	1,232.7	105.5	1,338.2	7.9	73.0
May	1,234.8	105.9	1,340.7	7.9	73.0
June	1,237.0	105.2	1,342.2	7.8	73.0
July	1,239.1	104.0	1,343.1	7.7	73.0
August	1,240.5	102.5	1,343.1	7.6	72.9
FEMALES					
<i>1998-</i>					
June	941.8	86.9	1,028.6	8.4	54.4
July	944.2	87.2	1,031.4	8.5	54.4
August	945.4	86.5	1,031.9	8.4	54.4
September	945.4	84.7	1,030.1	8.2	54.3
October	944.7	82.1	1,026.7	8.0	54.0
November	943.4	79.2	1,022.6	7.7	53.7
December	941.7	76.7	1,018.4	7.5	53.5
<i>1999-</i>					
January	939.9	75.0	1,014.9	7.4	53.2
February	938.5	74.1	1,012.6	7.3	53.0
March	938.3	73.9	1,012.2	7.3	53.0
April	939.4	74.0	1,013.4	7.3	53.0
May	942.1	74.2	1,016.3	7.3	53.0
June	946.0	74.3	1,020.4	7.3	53.2
July	950.4	74.4	1,024.8	7.3	53.4
August	954.6	74.3	1,028.9	7.2	53.5
PERSONS					
<i>1998-</i>					
June	2,162.2	196.1	2,358.3	8.3	63.7
July	2,166.4	194.7	2,361.1	8.2	63.7
August	2,168.2	192.2	2,360.4	8.1	63.6
September	2,168.1	188.6	2,356.7	8.0	63.4
October	2,167.1	184.3	2,351.4	7.8	63.2
November	2,166.3	179.9	2,346.2	7.7	63.0
December	2,165.6	176.8	2,342.4	7.5	62.8
<i>1999-</i>					
January	2,165.1	175.7	2,340.9	7.5	62.7
February	2,165.9	176.5	2,342.3	7.5	62.7
March	2,168.4	178.1	2,346.5	7.6	62.7
April	2,172.1	179.6	2,351.6	7.6	62.8
May	2,176.9	180.1	2,357.0	7.6	62.8
June	2,183.0	179.5	2,362.5	7.6	62.9
July	2,189.4	178.4	2,367.8	7.5	63.0
August	2,195.2	176.8	2,372.0	7.5	63.0

TABLE 4. CIVILIAN POPULATION AGED 15 YEARS AND OVER BY LABOUR FORCE STATUS, AGE, AND ATTENDANCE AT AN EDUCATIONAL INSTITUTION, VICTORIA, AUGUST 1999

<i>Particulars</i>	<i>Employed</i>			<i>Unemp- loyed ('000)</i>	<i>Labour force ('000)</i>	<i>Not in labour force ('000)</i>	<i>Unemp- loyment rate (%)</i>	<i>Partici- pation rate (%)</i>
	<i>Full- time ('000)</i>	<i>Part- time ('000)</i>	<i>Total ('000)</i>					
Age (years) — 15 - 19								
15 - 17	7.1	52.6	59.7	16.4	76.1	115.9	21.5	39.6
18 - 19	37.1	42.2	79.3	12.4	91.7	39.4	13.5	69.9
Attending school	*0.3	54.4	54.7	13.5	68.2	124.1	19.7	35.5
Not attending school -								
Left before 1997	8.8	*3.5	12.3	*2.5	14.8	*2.2	*17.1	87.0
1997	17.3	15.1	32.4	5.0	37.4	10.5	13.3	78.1
Left from 1998 to survey date	17.8	21.8	39.6	7.8	47.3	18.0	16.4	72.4
Total aged 15 - 19 years	44.2	94.9	139.0	28.8	167.8	155.4	17.1	51.9
Age (years) -								
20 - 24	168.9	77.4	246.2	31.5	277.7	65.0	11.3	81.0
25 - 34	456.5	100.7	557.2	39.2	596.4	136.2	6.6	81.4
35 - 44	422.9	128.0	551.0	34.2	585.1	137.2	5.8	81.0
45 - 54	359.0	111.3	470.3	20.9	491.2	133.3	4.3	78.7
55 and over	148.7	66.5	215.3	11.3	226.5	793.3	5.0	22.2
Total all ages	1,600.2	578.8	2,179.0	165.8	2,344.8	1,420.5	7.1	62.3
Attending tertiary educational institution full-time								
Age (years) -								
15 - 19	*0.5	30.2	30.7	4.9	35.6	22.3	13.8	61.6
20 - 24	*2.7	42.4	45.0	9.6	54.6	34.8	17.5	61.1

TABLE 5. CIVILIAN POPULATION AGED 15 YEARS AND OVER BY LABOUR FORCE STATUS AND RELATIONSHIP IN HOUSEHOLD, VICTORIA, AUGUST 1999

<i>Relationship in household</i>	<i>Employed</i>			<i>Unem- ployed ('000)</i>	<i>Labour force ('000)</i>	<i>Not in labour force ('000)</i>	<i>Civilian popu- lation 15 years and over ('000)</i>	<i>Unemp- loyment rate (%)</i>	<i>Partici- pation rate (%)</i>
	<i>Full- time ('000)</i>	<i>Part- time ('000)</i>	<i>Total ('000)</i>						
MALES									
Family member	889.1	122.1	1,011.2	71.6	1,082.8	385.0	1,467.8	6.6	73.8
Husband or wife	710.4	52.6	763.0	31.7	794.7	263.1	1,057.8	4.0	75.1
With children under 15	373.3	15.5	388.9	18.8	407.7	26.3	433.9	4.6	93.9
Without children under 15	337.1	37.0	374.1	12.9	387.0	236.8	623.9	3.3	62.0
With dependants	452.0	20.9	472.9	19.7	492.6	37.9	530.4	4.0	92.9
Without dependants	258.4	31.7	290.1	12.0	302.1	225.2	527.3	4.0	57.3
Lone parent	12.7	*2.0	14.7	*2.4	17.1	10.1	27.1	*13.8	62.9
With children under 15	*4.5	*0.9	5.3	*1.2	6.6	*2.6	9.1	*18.6	71.8
With dependent students but without children under 15	*2.8	*0.3	*3.1	*0.6	*3.7	*0.6	*4.3	*15.7	*86.3
Without dependants	5.4	*0.9	6.3	*0.6	6.8	6.9	13.7	*8.2	49.6
Dependent student(a)	*1.3	46.6	47.9	10.0	57.9	76.3	134.3	17.3	43.2
Non-dependent child(b)	147.3	17.2	164.6	24.1	188.6	19.7	208.3	12.8	90.5
Other family person	17.4	*3.7	21.0	*3.4	24.4	15.8	40.3	*13.9	60.7
Non-family member	151.2	29.1	180.3	22.4	202.8	83.9	286.7	11.1	70.7
Lone person	78.2	11.8	90.0	9.1	99.1	61.6	160.6	9.2	61.7
Not living alone	73.0	17.3	90.4	13.3	103.7	22.4	126.1	12.9	82.3
Total	1,040.3	151.3	1,191.5	94.0	1,285.6	468.9	1,754.5	7.3	73.3
Not family coded(c)	32.2	*2.0	34.2	*4.4	38.6	49.2	87.8	*11.4	44.0
FEMALES									
Family member	406.6	380.2	786.9	53.8	840.7	660.3	1,501.0	6.4	56.0
Husband or wife	283.2	254.7	538.0	20.8	558.8	470.2	1,028.9	3.7	54.3
With children under 15	93.2	143.2	236.5	11.3	247.8	169.7	417.5	4.6	59.3
Without children under 15	190.0	111.5	301.5	9.5	311.0	300.4	611.4	3.1	50.9
With dependants	127.8	175.1	302.9	13.8	316.7	193.7	510.5	4.4	62.1
Without dependants	155.4	79.6	235.0	7.0	242.0	276.4	518.5	2.9	46.7
Lone parent	36.0	38.5	74.5	12.2	86.8	83.4	170.2	14.1	51.0
With children under 15	16.2	25.8	42.0	9.7	51.7	48.5	100.2	18.7	51.6
With dependent students but without children under 15	10.1	6.4	16.4	*0.9	17.3	5.9	23.2	*5.2	74.6
Without dependants	9.8	6.3	16.1	*1.6	17.7	29.1	46.8	*9.2	37.9
Dependent student(a)	*1.0	60.6	61.6	11.2	72.8	67.1	139.9	15.3	52.1
Non-dependent child(b)	77.0	23.2	100.2	9.0	109.1	12.6	121.7	8.2	89.7
Other family person	9.4	*3.2	12.6	*0.6	13.2	27.1	40.3	*4.6	32.7
Non-family member	104.9	31.6	136.5	9.7	146.2	160.3	306.5	6.6	47.7
Lone person	56.2	14.2	70.5	5.4	75.9	135.6	211.4	7.1	35.9
Not living alone	48.7	17.3	66.0	*4.3	70.3	24.7	95.0	*6.1	74.0
Total	511.5	411.8	923.4	63.5	986.8	820.6	1,807.5	6.4	54.6
Not family coded(c)	16.2	13.7	29.9	*3.9	33.8	81.7	115.4	*11.5	29.3

TABLE 5. CIVILIAN POPULATION AGED 15 YEARS AND OVER BY LABOUR FORCE STATUS AND RELATIONSHIP IN HOUSEHOLD, VICTORIA, AUGUST 1999—continued

<i>Relationship in household</i>	<i>Employed</i>			<i>Unemp- loyed ('000)</i>	<i>Labour force ('000)</i>	<i>Not in labour force ('000)</i>	<i>Civilian popu- lation 15 years and over ('000)</i>	<i>Unemp- loyment rate (%)</i>	<i>Partici- pation rate (%)</i>
	<i>Full- time ('000)</i>	<i>Part- time ('000)</i>	<i>Total ('000)</i>						
PERSONS									
Family member	1,295.7	502.3	1,798.1	125.4	1,923.4	1,045.4	2,968.8	6.5	64.8
Husband or wife	993.6	307.3	1,300.9	52.5	1,353.5	733.3	2,086.7	3.9	64.9
With children under 15	466.6	158.8	625.3	30.1	655.4	196.0	851.4	4.6	77.0
Without children under 15	527.0	148.6	675.6	22.4	698.0	537.3	1,235.3	3.2	56.5
With dependants	579.8	196.0	775.9	33.5	809.3	231.6	1,040.9	4.1	77.8
Without dependants	413.8	111.3	525.1	19.1	544.1	501.7	1,045.8	3.5	52.0
Lone parent	48.7	40.5	89.2	14.6	103.8	93.5	197.3	14.0	52.6
With children under 15	20.7	26.7	47.4	10.9	58.3	51.0	109.3	18.7	53.3
With dependent students but without children under 15	12.9	6.7	19.5	*1.5	21.0	6.5	27.5	*7.0	76.4
Without dependants	15.1	7.2	22.3	*2.2	24.5	36.0	60.5	*8.9	40.5
Dependent student(a)	*2.3	107.2	109.6	21.2	130.8	143.4	274.2	16.2	47.7
Non-dependent child(b)	224.3	40.4	264.7	33.1	297.8	32.3	330.1	11.1	90.2
Other family person	26.8	6.8	33.6	*4.0	37.6	42.9	80.6	*10.7	46.7
Non-family member	256.1	60.7	316.8	32.1	349.0	244.2	593.2	9.2	58.8
Lone person	134.4	26.1	160.5	14.5	175.0	197.1	372.1	8.3	47.0
Not living alone	121.7	34.6	156.4	17.7	174.0	47.1	221.1	10.1	78.7
Total	1,551.8	563.1	2,114.9	157.5	2,272.4	1,289.6	3,562.0	6.9	63.8
Not family coded(c)	48.4	15.7	64.1	8.3	72.4	130.9	203.3	11.4	35.6

(a) Excludes persons aged 20-24 attending school. Also excludes sons or daughters aged 15-24 who are classified as husbands, wives or lone parents. (b) Aged 15 and over. (c) Includes usual residents of a household where relationship was not determined, visitors to private dwellings, and persons enumerated in non-private dwellings.

TABLE 6. CIVILIAN POPULATION AGED 15 YEARS AND OVER BY LABOUR FORCE STATUS, BIRTHPLACE, AND PERIOD OF ARRIVAL IN AUSTRALIA, VICTORIA, AUGUST 1999

<i>Birthplace particulars</i>	<i>Employed</i>			<i>Unemp-loyed ('000)</i>	<i>Labour force ('000)</i>	<i>Not in labour force ('000)</i>	<i>Unemp-loyment rate (%)</i>	<i>Partici-pation rate (a) (%)</i>
	<i>Full-time ('000)</i>	<i>Part-time ('000)</i>	<i>Total ('000)</i>					
Born in Australia	1,199.9	448.9	1,648.8	114.0	1,762.9	890.0	6.5	66.5
Born outside Australia —								
Africa	14.8	*4.1	18.9	5.0	23.9	17.3	20.9	58.0
America	21.4	8.5	29.9	*2.9	32.8	11.7	*8.8	73.7
Southeast Asia —	47.3	15.0	62.3	9.8	72.0	53.1	13.5	57.5
Malaysia	7.5	*2.5	10.1	*0.5	10.6	*3.6	*4.9	74.7
Viet Nam	16.2	*4.1	20.3	5.1	25.3	25.3	20.0	50.0
Other Southeast Asia	23.6	8.3	32.0	*4.2	36.1	24.3	*11.5	59.8
Northeast Asia	16.0	7.5	23.6	*1.4	25.0	24.3	*5.8	50.7
Southern Asia	30.2	9.0	39.2	*3.4	42.5	17.3	*7.9	71.1
The Middle East and North Africa	19.5	5.6	25.2	5.1	30.3	24.2	16.8	55.6
Europe —	216.8	68.5	285.3	20.7	306.0	309.7	6.8	49.7
Germany	11.0	*2.4	13.4	*1.1	14.5	12.2	*7.6	54.2
Greece	18.6	5.7	24.3	*2.8	27.2	36.1	*10.5	43.0
Italy	24.3	10.0	34.3	*1.1	35.4	61.5	*3.2	36.6
Malta	7.7	*3.9	11.5	*1.8	13.3	16.4	*13.2	44.7
Netherlands	7.8	*2.0	9.7	*0.3	10.0	9.2	*2.6	52.2
Poland	6.4	*1.7	8.1	*0.6	8.6	13.0	*6.4	39.8
UK and Ireland	93.1	29.9	123.0	6.3	129.3	86.6	4.9	59.9
Former Yugoslav Republics	25.4	5.1	30.5	5.0	35.4	37.5	14.0	48.6
Other Europe	22.5	8.0	30.5	*1.8	32.2	37.2	*5.5	46.4
Oceania —	34.2	11.6	45.8	*3.5	49.4	11.4	*7.2	81.3
New Zealand	27.1	9.9	37.0	*2.9	40.0	8.5	*7.3	82.5
Other Oceania	7.1	*1.7	8.8	*0.6	9.4	*2.9	*6.6	76.5
Main English speaking countries (b)	134.1	46.5	180.6	11.9	192.5	106.9	6.2	64.3
Other than main English speaking countries	266.3	83.3	349.5	39.9	389.4	362.1	10.2	51.8
Period of arrival —								
Before 1961	57.3	20.5	77.8	*2.5	80.4	166.1	*3.2	32.6
1961 - 1965	33.7	10.6	44.4	*4.2	48.6	48.0	*8.7	50.3
1966 - 1970	56.7	19.4	76.1	6.3	82.4	54.8	7.6	60.1
1971 - 1975	43.4	13.7	57.0	*2.7	59.7	35.1	*4.5	63.0
1976 - 1980	42.2	13.6	55.8	*3.8	59.5	24.4	*6.3	70.9
1981 - 1985	48.2	14.9	63.1	8.0	71.1	23.2	11.2	75.4
1986 - 1990	65.5	21.6	87.0	8.2	95.2	43.7	8.6	68.5
1991 - 1995	32.7	11.0	43.6	5.9	49.5	35.4	11.9	58.3
1996 to survey date	20.7	4.5	25.3	10.2	35.5	38.2	28.8	48.1
Total overseas born	400.4	129.8	530.2	51.8	581.9	469.0	8.9	55.4

(a) Because it is not practicable to ascertain the birthplace of persons in institutions (who are classified as 'not in the labour force'), labour force participation rates for persons classified by birthplace are calculated by using population estimates which exclude those in institutions. (b) Comprises Canada, New Zealand, South Africa, United Kingdom and Ireland, United States of America.

**TABLE 7. CIVILIAN POPULATION AGED 15 YEARS AND OVER BY LABOUR FORCE STATUS,
VICTORIAN REGIONS, JUNE 1999**

Region	Employed			Unemp- loyed (<i>'000</i>)	Labour force (<i>'000</i>)	Unemp- loyment rate (%)	Partici- pation rate (%)
	Full- time (<i>'000</i>)	Part- time (<i>'000</i>)	Total (<i>'000</i>)				
MALES							
Melbourne MSR-	796.6	131.4	928.0	70.4	998.3	7.0	74.6
North Western Melbourne	59.3	9.3	68.6	8.2	76.9	10.7	75.0
Outer Western Melbourne	128.2	13.3	141.6	16.7	158.3	10.6	74.2
Inner Melbourne	61.4	15.1	76.5	*2.9	79.4	*3.7	75.3
North Eastern Melbourne	92.3	16.0	108.3	9.6	117.9	8.1	74.2
Inner Eastern Melbourne	137.3	29.8	167.1	9.8	176.9	5.6	73.0
Southern Melbourne	82.2	16.2	98.4	7.4	105.8	7.0	72.3
Outer Eastern Melbourne	101.4	11.9	113.3	4.4	117.7	3.7	79.1
South Eastern Melbourne	79.1	11.0	90.1	6.9	97.1	7.1	75.5
Mornington Peninsula	55.2	8.9	64.1	4.3	68.5	6.3	73.6
Balance of Victoria MSR-	276.0	44.4	320.4	28.5	348.9	8.2	70.0
Barwon-Western District	69.0	15.0	84.0	7.4	91.4	8.1	71.3
Central Highlands-Wimmera	48.8	6.9	55.7	4.7	60.4	7.8	75.0
Loddon-Mallee	47.4	7.7	55.0	5.0	60.1	8.4	65.6
Goulburn-Ovens-Murray	69.9	8.2	78.1	*4.4	82.5	*5.3	70.0
All Gippsland	41.0	6.5	47.5	7.0	54.5	12.8	67.8
Total	1,072.6	175.8	1,248.4	98.8	1,347.2	7.3	73.3
FEMALES							
Melbourne MSR-	415.7	300.7	716.4	51.5	767.9	6.7	54.7
North Western Melbourne	31.6	21.2	52.8	5.8	58.6	9.9	53.0
Outer Western Melbourne	62.3	44.1	106.3	10.9	117.3	9.3	56.7
Inner Melbourne	40.0	21.7	61.7	3.9	65.6	5.9	61.0
North Eastern Melbourne	52.5	29.2	81.7	6.2	88.0	7.1	49.9
Inner Eastern Melbourne	70.5	64.9	135.4	6.5	141.9	4.6	55.8
Southern Melbourne	49.7	28.0	77.7	3.0	80.7	3.7	50.1
Outer Eastern Melbourne	42.5	37.5	80.0	5.1	85.1	6.0	56.5
South Eastern Melbourne	37.5	31.3	68.9	6.3	75.2	8.4	56.5
Mornington Peninsula	29.0	22.7	51.7	3.7	55.5	6.7	53.8
Balance of Victoria MSR-	107.9	127.5	235.4	18.1	253.5	7.1	49.3
Barwon-Western District	29.9	32.3	62.2	5.1	67.4	7.6	46.9
Central Highlands-Wimmera	13.7	20.4	34.0	*2.0	36.0	*5.6	48.3
Loddon-Mallee	18.8	23.9	42.7	*4.3	47.1	*9.2	47.1
Goulburn-Ovens-Murray	28.1	31.7	59.8	*3.1	62.9	*4.9	54.2
All Gippsland	17.4	19.3	36.6	*3.5	40.1	*8.7	50.1
Total	523.6	428.2	951.8	69.6	1,021.4	6.8	53.2
PERSONS							
Melbourne MSR-	1,212.2	432.1	1,644.3	121.9	1,766.2	6.9	64.4
North Western Melbourne	90.9	30.6	121.5	14.0	135.5	10.3	63.6
Outer Western Melbourne	190.5	57.4	247.9	27.7	275.6	10.0	65.6
Inner Melbourne	101.4	36.8	138.2	6.8	145.0	4.7	68.1
North Eastern Melbourne	144.9	45.2	190.1	15.8	205.9	7.7	61.4
Inner Eastern Melbourne	207.8	94.6	302.4	16.4	318.8	5.1	64.2
Southern Melbourne	131.9	44.2	176.1	10.4	186.5	5.6	60.7
Outer Eastern Melbourne	143.9	49.4	193.3	9.5	202.8	4.7	67.7
South Eastern Melbourne	116.7	42.3	159.0	13.3	172.3	7.7	65.8
Mornington Peninsula	84.3	31.5	115.8	8.1	123.9	6.5	63.2
Balance of Victoria MSR-	383.9	171.9	555.8	46.6	602.4	7.7	59.5
Barwon-Western District	98.9	47.4	146.3	12.5	158.8	7.9	58.4
Central Highlands-Wimmera	62.5	27.3	89.7	6.8	96.5	7.0	62.2
Loddon-Mallee	66.2	31.6	97.8	9.4	107.2	8.7	56.0
Goulburn-Ovens-Murray	98.0	39.9	137.9	7.5	145.4	5.1	62.2
All Gippsland	58.4	25.8	84.1	10.5	94.6	11.1	58.9
Total	1,596.2	604.0	2,200.2	168.4	2,368.6	7.1	63.1

**TABLE 8. CIVILIAN POPULATION AGED 15 YEARS AND OVER BY LABOUR FORCE STATUS,
VICTORIAN REGIONS, JULY 1999**

Region	Employed			Unemp- loyed (<i>'000</i>)	Labour force (<i>'000</i>)	Unemp- loyment rate (%)	Partici- pation rate (%)
	Full- time (<i>'000</i>)	Part- time (<i>'000</i>)	Total (<i>'000</i>)				
MALES							
Melbourne MSR-	804.3	117.7	922.0	68.9	990.9	7.0	73.9
North Western Melbourne	58.5	7.9	66.4	7.0	73.4	9.5	71.2
Outer Western Melbourne	125.2	14.9	140.1	14.7	154.8	9.5	72.9
Inner Melbourne	62.0	11.9	74.0	4.1	78.0	5.2	79.3
North Eastern Melbourne	93.7	11.4	105.1	9.1	114.2	7.9	74.1
Inner Eastern Melbourne	136.8	27.1	163.9	10.0	173.9	5.7	71.6
Southern Melbourne	90.4	16.2	106.6	5.3	111.9	4.8	71.5
Outer Eastern Melbourne	100.9	10.7	111.7	5.8	117.5	4.9	78.7
South Eastern Melbourne	80.7	10.2	90.9	7.5	98.4	7.7	76.4
Mornington Peninsula	56.2	7.1	63.3	5.5	68.8	8.0	71.9
Balance of Victoria MSR-	278.3	43.0	321.2	26.6	347.8	7.6	69.7
Barwon-Western District	67.6	12.5	80.1	6.5	86.6	7.5	70.7
Central Highlands-Wimmera	50.1	8.0	58.2	*3.9	62.0	*6.3	75.3
Loddon-Mallee	49.4	9.0	58.3	*3.9	62.2	*6.3	66.7
Goulburn-Ovens-Murray	68.9	7.2	76.0	5.1	81.1	6.3	70.2
All Gippsland	42.3	6.3	48.6	7.3	55.9	13.0	65.5
Total	1,082.6	160.6	1,243.2	95.5	1,338.7	7.1	72.8
FEMALES							
Melbourne MSR-	433.4	291.0	724.4	55.7	780.1	7.1	55.5
North Western Melbourne	29.6	18.4	48.0	5.8	53.8	10.8	51.2
Outer Western Melbourne	60.2	43.3	103.4	11.4	114.8	9.9	55.3
Inner Melbourne	46.2	19.0	65.2	3.2	68.4	4.7	64.7
North Eastern Melbourne	51.8	29.9	81.7	4.9	86.6	5.6	51.2
Inner Eastern Melbourne	74.0	64.8	138.9	8.3	147.2	5.6	56.7
Southern Melbourne	55.9	30.3	86.2	4.5	90.7	5.0	52.8
Outer Eastern Melbourne	45.7	35.6	81.3	7.2	88.5	8.1	59.3
South Eastern Melbourne	40.6	27.6	68.1	4.9	73.0	6.7	54.5
Mornington Peninsula	29.4	22.2	51.6	5.5	57.1	9.7	55.1
Balance of Victoria MSR-	109.1	129.8	238.9	18.2	257.1	7.1	50.0
Barwon-Western District	27.5	32.3	59.9	6.3	66.2	9.5	48.4
Central Highlands-Wimmera	15.7	20.5	36.2	*1.4	37.6	*3.7	49.6
Loddon-Mallee	20.0	24.7	44.7	*4.0	48.7	*8.2	47.6
Goulburn-Ovens-Murray	29.2	32.3	61.5	*3.1	64.5	*4.7	55.7
All Gippsland	16.7	20.0	36.7	*3.5	40.1	*8.7	47.8
Total	542.5	420.8	963.3	73.9	1,037.2	7.1	54.0
PERSONS							
Melbourne MSR-	1,237.7	408.6	1,646.4	124.6	1,771.0	7.0	64.5
North Western Melbourne	88.1	26.3	114.4	12.8	127.2	10.1	61.1
Outer Western Melbourne	185.4	58.2	243.5	26.0	269.6	9.7	64.2
Inner Melbourne	108.2	30.9	139.2	7.3	146.4	5.0	71.7
North Eastern Melbourne	145.5	41.2	186.8	13.9	200.7	6.9	62.1
Inner Eastern Melbourne	210.8	91.9	302.7	18.3	321.0	5.7	63.9
Southern Melbourne	146.2	46.5	192.8	9.9	202.6	4.9	61.7
Outer Eastern Melbourne	146.6	46.3	193.0	13.0	206.0	6.3	69.0
South Eastern Melbourne	121.2	37.8	159.1	12.4	171.4	7.2	65.3
Mornington Peninsula	85.6	29.3	114.9	11.0	125.9	8.7	63.2
Balance of Victoria MSR-	387.4	172.7	560.1	44.8	604.9	7.4	59.7
Barwon-Western District	95.1	44.8	139.9	12.8	152.7	8.4	58.9
Central Highlands-Wimmera	65.8	28.5	94.3	5.3	99.6	5.3	63.0
Loddon-Mallee	69.3	33.7	103.0	7.9	110.9	7.1	56.7
Goulburn-Ovens-Murray	98.1	39.4	137.5	8.1	145.6	5.6	62.9
All Gippsland	59.0	26.3	85.3	10.8	96.1	11.2	56.7
Total	1,625.1	581.4	2,206.5	169.4	2,375.9	7.1	63.2

**TABLE 9. CIVILIAN POPULATION AGED 15 YEARS AND OVER BY LABOUR FORCE STATUS,
VICTORIAN REGIONS, AUGUST 1999**

Region	Employed			Unemp- loyed (<i>'000</i>)	Labour force (<i>'000</i>)	Unemp- loyment rate (%)	Partici- pation rate (%)
	Full- time (<i>'000</i>)	Part- time (<i>'000</i>)	Total (<i>'000</i>)				
MALES							
Melbourne MSR-	792.9	116.5	909.4	69.2	978.6	7.1	72.9
North Western Melbourne	56.9	7.8	64.7	6.0	70.7	8.5	70.2
Outer Western Melbourne	125.2	16.5	141.7	17.7	159.4	11.1	74.4
Inner Melbourne	57.2	11.9	69.1	5.7	74.7	7.6	75.9
North Eastern Melbourne	94.2	13.7	108.0	9.3	117.3	7.9	72.5
Inner Eastern Melbourne	138.2	28.2	166.5	8.1	174.5	4.6	70.3
Southern Melbourne	85.7	13.1	98.8	5.4	104.2	5.2	67.5
Outer Eastern Melbourne	100.5	9.6	110.1	5.3	115.4	4.6	78.0
South Eastern Melbourne	80.6	8.2	88.8	5.7	94.5	6.1	74.5
Mornington Peninsula	54.4	7.5	61.9	6.1	68.0	8.9	75.0
Balance of Victoria MSR-	279.5	36.8	316.3	29.2	345.5	8.5	69.2
Barwon-Western District	67.1	10.8	77.8	7.0	84.9	8.3	68.9
Central Highlands-Wimmera	52.8	7.5	60.3	4.8	65.1	7.4	75.3
Loddon-Mallee	48.7	6.5	55.2	5.9	61.2	9.7	67.9
Goulburn-Ovens-Murray	69.6	6.5	76.1	5.3	81.4	6.5	69.9
All Gippsland	41.4	5.5	46.9	6.1	53.0	11.5	63.6
Total	1,072.4	153.3	1,225.7	98.4	1,324.2	7.4	71.9
FEMALES							
Melbourne MSR-	422.6	293.1	715.7	50.1	765.8	6.5	54.4
North Western Melbourne	29.6	18.8	48.4	4.9	53.3	9.2	51.1
Outer Western Melbourne	59.6	46.2	105.8	10.8	116.6	9.3	55.7
Inner Melbourne	42.5	18.7	61.2	*2.3	63.5	*3.7	62.2
North Eastern Melbourne	52.6	27.6	80.1	4.3	84.5	5.1	49.6
Inner Eastern Melbourne	74.5	61.8	136.3	8.0	144.2	5.5	55.6
Southern Melbourne	51.0	32.3	83.3	4.9	88.2	5.6	51.8
Outer Eastern Melbourne	42.9	35.7	78.7	5.6	84.3	6.6	55.5
South Eastern Melbourne	40.6	27.0	67.6	5.6	73.2	7.6	53.1
Mornington Peninsula	29.3	25.1	54.4	3.6	58.0	6.2	56.6
Balance of Victoria MSR-	105.2	132.4	237.6	17.3	254.9	6.8	49.5
Barwon-Western District	26.9	33.1	59.9	6.5	66.5	9.8	47.6
Central Highlands-Wimmera	16.6	20.8	37.4	*2.5	39.9	*6.3	51.1
Loddon-Mallee	21.2	23.6	44.8	*3.2	48.0	*6.6	48.4
Goulburn-Ovens-Murray	26.6	32.4	59.0	*2.2	61.2	*3.6	53.6
All Gippsland	13.9	22.6	36.5	*2.8	39.3	*7.2	46.7
Total	527.8	425.5	953.3	67.4	1,020.6	6.6	53.1
PERSONS							
Melbourne MSR-	1,215.5	409.6	1,625.1	119.3	1,744.4	6.8	63.4
North Western Melbourne	86.5	26.6	113.1	10.9	124.0	8.8	60.5
Outer Western Melbourne	184.8	62.7	247.5	28.5	276.0	10.3	65.2
Inner Melbourne	99.7	30.6	130.2	8.0	138.2	5.8	69.0
North Eastern Melbourne	146.8	41.3	188.1	13.6	201.7	6.8	60.8
Inner Eastern Melbourne	212.7	90.0	302.7	16.0	318.7	5.0	62.8
Southern Melbourne	136.7	45.4	182.1	10.4	192.4	5.4	59.3
Outer Eastern Melbourne	143.4	45.3	188.7	10.9	199.6	5.5	66.6
South Eastern Melbourne	121.2	35.2	156.4	11.3	167.7	6.7	63.4
Mornington Peninsula	83.7	32.5	116.2	9.7	125.9	7.7	65.3
Balance of Victoria MSR-	384.7	169.2	553.9	46.5	600.4	7.7	59.2
Barwon-Western District	93.9	43.8	137.8	13.6	151.4	9.0	57.6
Central Highlands-Wimmera	69.4	28.2	97.6	7.3	105.0	7.0	63.9
Loddon-Mallee	69.9	30.1	100.0	9.1	109.1	8.3	57.7
Goulburn-Ovens-Murray	96.2	38.9	135.1	7.5	142.6	5.3	61.8
All Gippsland	55.3	28.1	83.3	8.9	92.3	9.7	55.1
Total	1,600.2	578.8	2,179.0	165.8	2,344.8	7.1	62.3

**TABLE 10. CIVILIAN POPULATION AGED 15 YEARS AND OVER BY
LABOUR FORCE STATUS AND AGE,
VICTORIAN REGIONS, AUGUST 1999**

Age (years)	Males				Females				Persons			
	Employed (<i>'000</i>)	Labour force (<i>'000</i>)	Unemp- loyment rate (%)	Partici- pation rate (%)	Employed (<i>'000</i>)	Labour force (<i>'000</i>)	Unemp- loyment rate (%)	Partici- pation rate (%)	Employed (<i>'000</i>)	Labour force (<i>'000</i>)	Unemp- loyment rate (%)	Partici- pation rate (%)
NORTH WESTERN MELBOURNE												
15 - 24	12.1	13.3	*9.1	73.8	9.0	9.8	*8.6	66.6	21.1	23.1	*8.9	70.5
25 - 34	22.5	25.0	*10.0	90.9	17.8	19.5	*8.8	69.2	40.2	44.5	9.5	79.9
35 - 44	13.9	14.8	*6.0	94.3	11.3	13.3	*15.2	71.8	25.2	28.1	*10.3	82.1
45 - 54	10.0	10.8	*8.1	75.6	6.6	6.9	*4.5	49.2	16.6	17.7	*6.7	62.5
55 and over	6.3	6.8	*8.0	27.1	3.8	3.8	*0.0	13.1	10.0	10.6	*5.1	19.6
Total	64.7	70.7	8.5	70.2	48.4	53.3	9.2	51.1	113.1	124.0	8.8	60.5
OUTER WESTERN MELBOURNE												
15 - 24	23.0	26.9	14.6	70.4	21.1	26.4	20.1	74.5	44.1	53.3	17.3	72.4
25 - 34	40.3	45.6	11.6	96.1	29.4	31.7	*7.4	73.0	69.7	77.3	9.9	85.1
35 - 44	38.8	43.0	9.6	90.1	23.1	24.9	*7.1	62.7	62.0	67.8	8.7	77.7
45 - 54	28.4	31.6	10.2	85.8	24.3	25.1	*3.4	65.4	52.7	56.8	7.2	75.4
55 and over	11.2	12.3	*9.0	28.0	7.9	8.5	*6.7	16.2	19.1	20.8	*8.1	21.6
Total	141.7	159.4	11.1	74.4	105.8	116.6	9.3	55.7	247.5	276.0	10.3	65.2
INNER MELBOURNE												
15 - 24	9.3	11.7	*20.3	61.2	14.3	14.9	*3.9	64.8	23.6	26.6	*11.1	63.2
25 - 34	29.0	30.3	*4.1	91.5	24.1	24.9	*3.5	84.1	53.1	55.2	*3.8	88.0
35 - 44	15.3	16.5	*7.2	93.3	9.2	9.2	*0.0	65.3	24.5	25.7	*4.6	80.8
45 - 54	8.5	9.1	*6.5	79.5	10.4	11.0	*5.6	88.3	18.9	20.1	*6.0	84.1
55 and over	7.0	7.2	*3.7	42.1	*3.1	3.4	*8.4	14.8	10.1	10.6	*5.2	26.6
Total	69.1	74.7	7.6	75.9	61.2	63.5	*3.7	62.2	130.2	138.2	5.8	69.0
NORTH EASTERN MELBOURNE												
15 - 24	16.3	19.2	15.5	67.3	14.1	15.8	*10.9	60.5	30.3	35.0	13.4	64.0
25 - 34	29.4	32.2	8.7	93.6	24.9	25.9	*3.5	68.0	54.3	58.0	6.4	80.2
35 - 44	30.9	33.2	*7.1	95.8	23.1	23.9	*3.7	63.7	53.9	57.2	5.6	79.1
45 - 54	20.5	21.7	*5.4	89.2	13.3	13.9	*4.2	63.5	33.9	35.6	*4.9	77.0
55 and over	10.9	10.9	*0.0	27.5	4.7	5.0	*4.9	10.7	15.7	15.9	*1.5	18.4
Total	108.0	117.3	7.9	72.5	80.1	84.5	5.1	49.6	188.1	201.7	6.8	60.8
INNER EASTERN MELBOURNE												
15 - 24	31.8	34.8	8.7	65.1	29.8	33.1	9.9	68.0	61.6	67.9	9.3	66.5
25 - 34	37.8	39.6	*4.7	90.1	27.8	29.0	*4.2	72.2	65.6	68.7	4.5	81.6
35 - 44	34.1	35.5	*4.1	94.5	29.9	31.3	*4.6	73.4	63.9	66.9	*4.4	83.3
45 - 54	38.1	38.9	*2.2	93.0	36.1	37.6	*4.0	76.3	74.1	76.5	*3.1	84.0
55 and over	24.8	25.6	*3.2	35.8	12.7	13.2	*4.0	16.8	37.5	38.8	*3.5	25.8
Total	166.5	174.5	4.6	70.3	136.3	144.2	5.5	55.6	302.7	318.7	5.0	62.8
SOUTHERN MELBOURNE												
15 - 24	15.0	18.4	18.4	61.7	13.4	15.5	*13.3	59.8	28.5	33.9	16.1	60.8
25 - 34	21.2	21.6	*1.5	93.3	18.7	18.7	*0.0	83.1	40.0	40.3	*0.8	88.3
35 - 44	25.6	26.5	*3.3	92.8	22.7	25.3	10.3	77.7	48.3	51.8	6.7	84.8
45 - 54	24.6	24.9	*1.2	89.5	23.5	23.8	*1.1	78.3	48.1	48.7	*1.2	83.6
55 and over	12.3	12.9	*4.2	28.6	4.8	4.8	*0.0	8.2	17.2	17.7	*3.1	17.0
Total	98.8	104.2	5.2	67.5	83.3	88.2	5.6	51.8	182.1	192.4	5.4	59.3

**TABLE 10. CIVILIAN POPULATION AGED 15 YEARS AND OVER BY
LABOUR FORCE STATUS AND AGE,
VICTORIAN REGIONS, AUGUST 1999 - *continued***

Age (years)	Males				Females				Persons			
	Employed (<i>'000</i>)	Labour force (<i>'000</i>)	Unemp- loyment rate (%)	Partici- pation rate (%)	Employed (<i>'000</i>)	Labour force (<i>'000</i>)	Unemp- loyment rate (%)	Partici- pation rate (%)	Employed (<i>'000</i>)	Labour force (<i>'000</i>)	Unemp- loyment rate (%)	Partici- pation rate (%)
OUTER EASTERN MELBOURNE												
15 - 24	15.1	18.4	17.7	67.8	17.3	19.4	*11.0	69.2	32.4	37.8	14.3	68.5
25 - 34	26.3	26.3	*0.0	95.5	18.2	20.2	*9.9	66.1	44.5	46.5	*4.3	80.0
35 - 44	35.6	36.5	*2.4	93.9	19.9	20.5	*2.8	62.2	55.6	57.0	*2.6	79.3
45 - 54	22.3	23.4	*5.0	94.1	16.5	17.0	*3.4	67.4	38.7	40.5	*4.3	80.7
55 and over	10.8	10.8	*0.0	36.6	6.8	7.1	*4.0	20.4	17.6	17.9	*1.6	27.8
Total	110.1	115.4	4.6	78.0	78.7	84.3	6.6	55.5	188.7	199.6	5.5	66.6
SOUTH EASTERN MELBOURNE												
15 - 24	17.2	19.9	*13.8	78.5	14.8	17.1	*13.8	58.2	31.9	37.1	13.8	67.6
25 - 34	25.0	25.9	*3.6	92.2	17.8	19.3	*7.6	60.2	42.8	45.2	*5.3	75.1
35 - 44	18.3	19.5	*6.1	95.6	18.2	19.9	*8.8	70.4	36.5	39.4	*7.4	80.9
45 - 54	19.6	20.2	*2.9	79.4	13.1	13.1	*0.0	68.9	32.8	33.4	*1.8	74.9
55 and over	8.7	9.0	*3.0	32.7	3.7	3.7	*0.0	12.9	12.4	12.7	*2.1	22.5
Total	88.8	94.5	6.1	74.5	67.6	73.2	7.6	53.1	156.4	167.7	6.7	63.4
MORNINGTON PENINSULA												
15 - 24	6.7	9.4	29.0	81.6	7.9	8.8	*10.5	66.2	14.6	18.2	20.1	73.4
25 - 34	15.0	16.9	*11.1	96.4	15.0	15.9	*5.8	74.5	30.0	32.8	8.5	84.4
35 - 44	17.9	18.8	*4.7	91.4	14.2	14.5	*2.0	76.8	32.1	33.3	*3.5	84.4
45 - 54	12.6	12.9	*2.3	88.0	12.7	13.9	*8.6	80.7	25.3	26.8	*5.6	84.1
55 and over	9.6	9.9	*2.8	37.7	4.7	5.0	*5.7	15.6	14.3	14.8	*3.8	25.6
Total	61.9	68.0	8.9	75.0	54.4	58.0	6.2	56.6	116.2	125.9	7.7	65.3

**TABLE 10. CIVILIAN POPULATION AGED 15 YEARS AND OVER BY
LABOUR FORCE STATUS AND AGE,
VICTORIAN REGIONS, AUGUST 1999 - *continued***

Age (years)	Males				Females				Persons			
	Employed (<i>'000</i>)	Labour force (<i>'000</i>)	Unemp- loyment rate (%)	Partici- pation rate (%)	Employed (<i>'000</i>)	Labour force (<i>'000</i>)	Unemp- loyment rate (%)	Partici- pation rate (%)	Employed (<i>'000</i>)	Labour force (<i>'000</i>)	Unemp- loyment rate (%)	Partici- pation rate (%)
BARWON-WESTERN DISTRICT												
15 - 24	14.6	15.9	*8.1	67.6	13.5	15.1	*10.7	60.9	28.1	31.1	*9.4	64.2
25 - 34	17.0	19.2	*11.8	94.6	11.4	13.0	*12.8	60.4	28.3	32.3	*12.2	77.0
35 - 44	19.7	21.5	*8.2	93.7	15.0	17.3	*13.0	66.8	34.7	38.8	*10.3	79.4
45 - 54	19.1	20.2	*5.6	86.0	15.7	16.4	*4.4	70.7	34.8	36.6	*5.1	78.4
55 and over	7.4	8.0	*7.2	24.3	4.3	4.6	*6.0	10.5	11.8	12.6	*6.8	16.4
Total	77.8	84.9	8.3	68.9	59.9	66.5	9.8	47.6	137.8	151.4	9.0	57.6
CENTRAL HIGHLANDS-WIMMERA												
15 - 24	10.1	12.4	*19.2	71.2	5.7	6.9	*17.8	63.2	15.8	19.4	*18.7	68.1
25 - 34	13.9	14.4	*3.7	96.0	9.2	9.4	*2.7	62.5	23.1	23.9	*3.3	79.2
35 - 44	14.2	15.3	*7.1	96.9	10.2	10.5	*2.6	71.2	24.4	25.8	*5.2	84.5
45 - 54	14.5	14.8	*1.8	91.8	9.0	9.5	*5.1	69.7	23.6	24.3	*3.1	81.6
55 and over	7.6	8.1	*6.7	37.0	*3.2	*3.5	*7.9	*14.8	10.8	11.6	*7.1	25.6
Total	60.3	65.1	7.4	75.3	37.4	39.9	*6.3	51.1	97.6	105.0	7.0	63.9
LODDON-MALLEE												
15 - 24	8.6	10.9	*21.3	71.8	8.6	10.1	*14.1	66.3	17.2	21.0	*17.8	69.1
25 - 34	12.1	14.1	*14.1	95.9	10.0	10.0	*0.0	66.4	22.2	24.2	*8.2	81.0
35 - 44	15.5	16.1	*3.4	91.1	10.5	11.5	*8.9	69.0	26.0	27.6	*5.7	80.4
45 - 54	10.2	10.8	*4.9	80.1	10.2	10.9	*6.7	70.3	20.4	21.7	*5.8	74.9
55 and over	8.7	9.3	*5.9	31.9	5.5	5.5	*0.0	15.0	14.2	14.7	*3.7	22.4
Total	55.2	61.2	9.7	67.9	44.8	48.0	*6.6	48.4	100.0	109.1	8.3	57.7
GOULBURN-OVENS-MURRAY												
15 - 24	9.2	11.2	*17.6	69.1	9.1	10.0	*9.8	56.6	18.3	21.2	*13.9	62.6
25 - 34	17.6	19.3	*8.9	86.1	12.9	13.2	*1.9	66.0	30.6	32.5	*6.1	76.6
35 - 44	20.9	21.6	*3.6	85.6	18.2	18.5	*1.3	75.9	39.1	40.1	*2.6	80.8
45 - 54	17.7	18.2	*2.9	88.0	14.1	14.6	*3.3	72.3	31.8	32.8	*3.1	80.2
55 and over	10.7	11.0	*2.6	34.5	4.6	4.9	*5.6	15.3	15.3	15.9	*3.5	24.9
Total	76.1	81.4	6.5	69.9	59.0	61.2	*3.6	53.6	135.1	142.6	5.3	61.8
ALL GIPPSLAND												
15 - 24	9.9	11.6	*14.9	71.9	7.9	8.4	*5.7	65.7	17.7	19.9	*11.0	69.2
25 - 34	7.3	8.4	*13.4	97.0	5.6	6.7	*15.7	60.2	12.9	15.1	*14.4	76.4
35 - 44	12.7	13.2	*4.1	90.9	12.0	12.5	*4.1	71.2	24.7	25.7	*4.1	80.1
45 - 54	11.6	12.4	*6.6	82.0	7.0	7.3	*3.3	55.2	18.7	19.7	*5.4	69.5
55 and over	5.4	7.3	*26.0	25.5	*3.9	4.5	*12.3	15.1	9.3	11.8	*20.8	20.2
Total	46.9	53.0	11.5	63.6	36.5	39.3	*7.2	46.7	83.3	92.3	9.7	55.1

**TABLE 10. CIVILIAN POPULATION AGED 15 YEARS AND OVER BY
LABOUR FORCE STATUS AND AGE,
VICTORIAN REGIONS, AUGUST 1999 - *continued***

Age (years)	Males				Females				Persons			
	Employed (<i>'000</i>)	Labour force (<i>'000</i>)	Unemp- loyment rate (%)	Partici- pation rate (%)	Employed (<i>'000</i>)	Labour force (<i>'000</i>)	Unemp- loyment rate (%)	Partici- pation rate (%)	Employed (<i>'000</i>)	Labour force (<i>'000</i>)	Unemp- loyment rate (%)	Partici- pation rate (%)
TOTAL MELBOURNE MSR												
15 - 19 -	44.1	54.7	19.4	47.1	48.6	59.0	17.5	52.3	92.7	113.6	18.4	49.6
15 - 17	16.3	20.7	*21.5	30.9	19.8	26.2	24.4	40.5	36.1	46.9	23.1	35.7
18 - 19	27.8	34.0	18.2	69.2	28.8	32.7	*12.0	68.0	56.6	66.7	15.1	68.6
20 - 24	102.4	117.4	12.8	86.9	93.0	101.9	8.7	77.2	195.4	219.3	10.9	82.1
25 - 34	246.4	263.3	6.4	93.2	193.7	205.1	5.6	71.8	440.1	468.4	6.0	82.4
35 - 44	230.4	244.2	5.7	93.4	171.6	182.9	6.2	68.9	402.0	427.2	5.9	81.1
45 - 54	184.6	193.6	4.7	87.3	156.5	162.4	3.6	71.2	341.0	356.0	4.2	79.2
55 - 59	56.6	58.5	*3.2	71.1	35.2	36.9	*4.6	45.5	91.9	95.4	*3.8	58.4
60 - 64	30.5	32.2	*5.1	48.4	11.9	12.4	*3.9	18.2	42.4	44.5	*4.8	33.1
65 and over	14.4	14.7	*2.0	8.3	5.1	5.1	*0.0	2.2	19.5	19.8	*1.5	4.8
Total	909.4	978.6	7.1	72.9	715.7	765.8	6.5	54.4	1,625.1	1,744.4	6.8	63.4
TOTAL BALANCE OF VICTORIA MSR												
15 - 19 -	22.1	27.0	18.1	55.4	24.2	27.1	*10.8	59.6	46.3	54.1	14.4	57.4
15 - 17	10.1	13.4	*24.8	43.3	13.6	15.7	*13.8	53.6	23.7	29.2	18.9	48.3
18 - 19	12.0	13.6	*11.5	76.4	10.6	11.4	*6.6	70.7	22.7	25.0	*9.3	73.7
20 - 24	30.2	35.0	13.7	88.1	20.6	23.4	*11.9	65.1	50.8	58.4	13.0	77.2
25 - 34	67.9	75.6	10.1	93.0	49.1	52.4	*6.2	63.2	117.1	128.0	8.5	78.0
35 - 44	83.0	87.7	5.4	91.2	66.0	70.3	*6.1	70.8	149.0	158.0	5.7	80.9
45 - 54	73.2	76.4	*4.3	85.9	56.1	58.8	*4.6	68.4	129.3	135.2	4.4	77.3
55 - 59	19.0	21.3	*10.8	64.4	13.7	15.1	*9.1	46.4	32.8	36.5	*10.1	55.5
60 - 64	10.5	12.0	*13.0	41.9	5.0	5.0	*0.0	17.2	15.5	17.0	*9.2	29.5
65 and over	10.4	10.4	*0.0	12.5	*2.9	*2.9	*0.0	*2.7	13.2	13.2	*0.0	7.1
Total	316.3	345.5	8.5	69.2	237.6	254.9	6.8	49.5	553.9	600.4	7.7	59.2
TOTAL VICTORIA												
15 - 19 -	66.2	81.7	19.0	49.5	72.8	86.1	15.4	54.4	139.0	167.8	17.1	51.9
15 - 17	26.4	34.1	22.8	34.8	33.4	41.9	20.4	44.6	59.7	76.1	21.5	39.6
18 - 19	39.8	47.6	16.2	71.1	39.4	44.1	10.6	68.7	79.3	91.7	13.5	69.9
20 - 24	132.6	152.4	13.0	87.2	113.6	125.3	9.3	74.6	246.2	277.7	11.3	81.0
25 - 34	314.4	338.9	7.2	93.1	242.8	257.5	5.7	69.8	557.2	596.4	6.6	81.4
35 - 44	313.4	331.9	5.6	92.8	237.6	253.2	6.2	69.5	551.0	585.1	5.8	81.0
45 - 54	257.7	270.1	4.6	86.9	212.6	221.1	3.9	70.5	470.3	491.2	4.3	78.7
55 - 59	75.7	79.9	*5.3	69.2	49.0	52.0	*5.9	45.7	124.6	131.9	5.5	57.5
60 - 64	41.0	44.2	*7.3	46.5	16.9	17.4	*2.8	17.9	57.9	61.6	*6.0	32.0
65 and over	24.8	25.1	*1.2	9.7	8.0	8.0	*0.0	2.4	32.8	33.1	*0.9	5.5
Total	1,225.7	1,324.2	7.4	71.9	953.3	1,020.6	6.6	53.1	2,179.0	2,344.8	7.1	62.3

**TABLE 11. EMPLOYED PERSONS BY INDUSTRY AND OCCUPATION(a) BY AGE,
VICTORIA, AUGUST 1999
(*000)**

Classification	Age group (years)							Total
	15 - 19	20 - 24	25 - 34	35 - 44	45 - 54	55 - 59	60 and over	
INDUSTRY								
Agriculture, forestry and fishing	*4.2	6.4	12.0	15.1	21.5	8.5	15.0	82.7
Mining	*0.0	*0.3	*1.2	*0.9	*0.8	*0.3	*0.0	*3.5
Manufacturing	12.5	32.4	92.2	93.4	71.9	16.6	12.1	331.2
Electricity, gas and water supply	*0.0	*1.2	*4.1	7.2	*3.9	*0.3	*0.3	16.9
Construction	7.1	15.3	41.1	43.4	29.4	9.0	5.9	151.1
Wholesale trade	*3.6	13.2	41.7	40.3	25.2	6.3	*4.3	134.7
Retail trade	71.5	59.9	67.4	58.3	56.8	13.3	9.5	336.7
Accommodation, cafes and restaurants	13.4	18.6	19.3	14.8	11.8	5.6	*3.5	87.1
Transport and storage	*2.6	6.7	25.3	28.8	22.8	6.1	*4.2	96.4
Communication services	*1.3	*2.4	14.0	9.9	11.6	*1.7	*1.1	42.0
Finance and insurance	*0.3	9.2	29.0	18.0	14.9	*4.1	*1.1	76.5
Property and business services	7.5	35.8	83.7	66.2	62.9	16.1	13.6	285.8
Government administration and defence	*0.0	*4.2	11.7	22.8	19.5	6.7	*1.6	66.3
Education	*2.4	9.5	28.8	46.9	49.2	10.0	4.8	151.5
Health and community services	*3.1	15.2	43.6	48.0	47.3	11.5	8.3	177.1
Cultural and recreational services	6.7	9.4	20.4	13.5	5.0	*1.6	*1.9	58.5
Personal and other services	*3.0	6.7	21.8	23.3	15.6	7.0	*3.5	80.9
Total	139.0	246.2	557.2	551.0	470.3	124.6	90.6	2,179.0
OCCUPATION								
Managers and administrators	*0.8	*1.8	24.3	44.2	53.3	14.6	18.4	157.4
Professionals	*2.4	31.0	126.9	115.0	99.8	25.4	15.7	416.2
Associate professionals	*4.0	18.1	63.8	72.4	60.3	16.7	9.5	244.6
Tradespersons and related workers	19.0	37.2	74.4	79.4	53.1	17.2	11.3	291.6
Advanced clerical and service workers	*0.8	9.5	28.9	24.1	24.1	5.1	*2.7	95.0
Intermediate clerical, sales and service workers	19.6	54.7	105.9	82.3	69.5	12.2	7.7	352.1
Intermediate production and transport workers	10.6	19.4	52.5	57.9	40.0	12.6	9.6	202.6
Elementary clerical, sales and service workers	57.2	44.4	41.6	34.0	27.3	8.7	7.5	220.8
Labourers and related workers	24.6	30.1	38.9	41.7	43.0	12.2	8.2	198.7
Total	139.0	246.2	557.2	551.0	470.3	124.6	90.6	2,179.0

(a) From August 1996, occupation data are classified to the Australian Standard Classification of Occupations, Second Edition. See the Explanatory notes for details.

**TABLE 12. EMPLOYED PERSONS BY INDUSTRY AND OCCUPATION(a) BY MARITAL STATUS,
VICTORIA, AUGUST 1999
(*000)**

Classification	Males			Females			Persons		
	Married	Other	Total	Married	Other	Total	Married	Other	Total
INDUSTRY									
Agriculture, forestry and fishing	37.4	18.9	56.3	21.5	4.9	26.4	58.9	23.8	82.7
Mining	*2.0	*0.9	*2.9	*0.0	*0.6	*0.6	*2.0	*1.5	*3.5
Manufacturing	156.0	80.7	236.6	62.2	32.3	94.5	218.2	113.0	331.2
Electricity, gas and water supply	11.6	*2.3	13.9	*1.9	*1.1	*3.0	13.5	*3.4	16.9
Construction	89.8	44.0	133.8	13.9	*3.5	17.3	103.7	47.4	151.1
Wholesale trade	61.5	27.1	88.6	30.8	15.3	46.1	92.4	42.4	134.7
Retail trade	79.2	82.5	161.7	79.5	95.5	174.9	158.7	177.9	336.7
Accommodation, cafes and restaurants	16.9	23.1	40.0	20.5	26.5	47.0	37.5	49.6	87.1
Transport and storage	53.8	21.7	75.5	11.5	9.3	20.8	65.3	31.0	96.4
Communication services	18.5	9.4	27.9	7.0	7.1	14.1	25.5	16.5	42.0
Finance and insurance	27.0	9.9	36.8	23.1	16.6	39.7	50.0	26.5	76.5
Property and business services	104.1	58.1	162.2	72.3	51.3	123.6	176.4	109.4	285.8
Government administration and defence	17.8	9.9	27.7	21.6	17.0	38.6	39.5	26.9	66.3
Education	34.5	11.9	46.4	66.9	38.3	105.1	101.4	50.2	151.5
Health and community services	24.9	14.5	39.5	89.5	48.1	137.6	114.4	62.6	177.1
Cultural and recreational services	13.9	18.5	32.3	11.1	15.1	26.2	24.9	33.6	58.5
Personal and other services	33.2	10.1	43.4	20.6	16.9	37.6	53.9	27.0	80.9
Total	782.2	443.5	1,225.7	554.0	399.3	953.3	1,336.2	842.8	2,179.0
OCCUPATION									
Managers and administrators	101.1	21.1	122.2	24.9	10.2	35.2	126.1	31.3	157.4
Professionals	145.8	68.8	214.6	124.8	76.8	201.6	270.6	145.6	416.2
Associate professionals	112.0	43.0	155.1	56.7	32.9	89.6	168.7	75.9	244.6
Tradespersons and related workers	170.6	90.7	261.3	18.9	11.4	30.3	189.5	102.1	291.6
Advanced clerical and service workers	6.5	*4.3	10.8	62.4	21.7	84.2	68.9	26.1	95.0
Intermediate clerical, sales and service workers	50.8	43.7	94.4	140.6	117.0	257.6	191.4	160.7	352.1
Intermediate production and transport workers	105.8	64.5	170.3	19.1	13.2	32.3	124.9	77.7	202.6
Elementary clerical, sales and service workers	30.5	46.5	76.9	58.3	85.6	143.9	88.7	132.1	220.8
Labourers and related workers	59.1	60.9	120.1	48.2	30.4	78.6	107.4	91.3	198.7
Total	782.2	443.5	1,225.7	554.0	399.3	953.3	1,336.2	842.8	2,179.0

(a) From August 1996, occupation data are classified to the Australian Standard Classification of Occupations, Second Edition. See the Explanatory notes for details.

TABLE 13. EMPLOYED PERSONS: AVERAGE WEEKLY HOURS WORKED(a) BY INDUSTRY AND OCCUPATION(b), VICTORIA, AUGUST 1999
(hours)

Classification	Males			Females			Persons		
	Married	Other	Total	Married	Other	Total	Married	Other	Total
INDUSTRY									
Agriculture, forestry and fishing	48.8	36.2	44.5	27.2	27.4	27.2	40.9	34.4	39.0
Mining	*57.9	*45.9	*54.1	*0.0	*37.5	*37.5	*57.9	*42.6	*51.4
Manufacturing	42.6	39.9	41.7	33.8	35.7	34.5	40.1	38.7	39.6
Electricity, gas and water supply	39.9	*33.0	38.7	*38.3	*49.1	*42.2	39.7	*38.2	39.4
Construction	41.5	40.2	41.1	21.2	*30.7	23.1	38.8	39.5	39.0
Wholesale trade	45.9	39.0	43.8	30.8	32.0	31.2	40.9	36.5	39.5
Retail trade	45.8	29.1	37.3	29.8	24.3	26.8	37.8	26.6	31.9
Accommodation, cafes and restaurants	47.4	28.0	36.2	27.6	22.7	24.9	36.6	25.2	30.1
Transport and storage	45.7	35.1	42.6	28.5	31.8	30.0	42.6	34.1	39.9
Communication services	44.8	38.0	42.5	31.0	32.6	31.8	41.0	35.7	38.9
Finance and insurance	42.4	38.5	41.3	28.4	35.7	31.5	35.9	36.8	36.2
Property and business services	43.0	37.2	40.9	30.0	34.8	32.0	37.7	36.1	37.1
Government administration and defence	35.2	35.7	35.4	29.7	34.5	31.8	32.2	34.9	33.3
Education	41.8	33.0	39.5	30.2	34.0	31.6	34.1	33.8	34.0
Health and community services	41.0	34.6	38.7	26.1	28.2	26.8	29.3	29.7	29.5
Cultural and recreational services	45.5	27.1	35.0	30.8	28.2	29.3	39.0	27.6	32.4
Personal and other services	41.7	30.9	39.2	26.6	29.8	28.0	35.9	30.2	34.0
Total	43.5	35.2	40.5	29.2	30.0	29.5	37.6	32.7	35.7
OCCUPATION									
Managers and administrators	50.6	46.7	49.9	34.3	44.7	37.4	47.4	46.1	47.1
Professionals	44.2	38.9	42.5	31.5	37.3	33.7	38.3	38.1	38.2
Associate professionals	47.8	39.6	45.6	38.4	39.7	38.9	44.7	39.7	43.1
Tradespersons and related workers	41.8	39.8	41.1	29.6	32.3	30.6	40.6	39.0	40.0
Advanced clerical and service workers	41.0	37.5	39.6	25.1	32.6	27.0	26.6	33.4	28.5
Intermediate clerical, sales and service workers	40.4	33.9	37.4	27.2	29.2	28.1	30.7	30.4	30.6
Intermediate production and transport workers	41.2	34.2	38.6	31.8	31.3	31.6	39.8	33.7	37.5
Elementary clerical, sales and service workers	37.1	23.6	28.9	25.6	20.1	22.3	29.5	21.3	24.6
Labourers and related workers	37.1	27.9	32.5	24.7	23.3	24.1	31.5	26.4	29.2
Total	43.5	35.2	40.5	29.2	30.0	29.5	37.6	32.7	35.7

(a) Persons with jobs who did not work during the survey week have been included in the calculation of average weekly hours worked. The relative standard errors of these estimates are obtained by first finding the relative standard error of the estimate of the total number of persons in the estimate and then multiplying by a factor of 0.9. For further information refer to the technical notes in Labour Force, Australia (6203.0). (b) From August 1996, occupation data are classified to the Australian Standard Classification of Occupations, Second Edition. See the Explanatory notes for details.

TABLE 14. EMPLOYED PERSONS: STATUS IN EMPLOYMENT AND AVERAGE WEEKLY HOURS WORKED, VICTORIA, AUGUST 1999

Status in employment	Males			Females			Persons		
	Married	Other	Total	Married	Other	Total	Married	Other	Total
	'000								
Employers	50.8	9.2	60.0	21.9	*3.4	25.3	72.6	12.6	85.3
Own account workers	107.5	34.3	141.8	49.6	15.4	65.0	157.1	49.7	206.9
Employees	622.2	396.6	1,018.8	474.0	377.6	851.5	1,096.2	774.2	1,870.4
Contributing family workers	*1.7	*3.4	5.1	8.5	*2.9	11.5	10.2	6.3	16.5
Total	782.2	443.5	1,225.7	554.0	399.3	953.3	1,336.2	842.8	2,179.0
AVERAGE WEEKLY HOURS WORKED (a)									
Employers	53.4	54.5	53.6	32.7	*52.9	35.4	47.2	54.1	48.2
Own account workers	43.9	39.4	42.8	27.6	30.7	28.4	38.8	36.7	38.3
Employees	42.7	34.6	39.5	29.5	29.8	29.7	37.0	32.3	35.0
Contributing family workers	*29.3	*17.1	21.2	12.6	*12.6	12.6	15.3	15.1	15.2
Total	43.5	35.2	40.5	29.2	30.0	29.5	37.6	32.7	35.7

(a) The relative standard errors of these estimates are obtained by first finding the relative standard error of the estimate of the total number of persons in the estimate and then multiplying by a factor of 0.9. For further information refer to the technical notes in Labour Force, Australia (6203.0).

TABLE 15. UNEMPLOYED PERSONS: INDUSTRY AND OCCUPATION(a) OF LAST JOB(b), VICTORIA, AUGUST 1999

Particulars	Number ('000)			Unemployment rate (%)		
	Males	Females	Persons	Males	Females	Persons
Industry						
Agriculture, forestry and fishing	*4.1	*2.5	6.6	*6.8	*8.7	7.4
Mining	*0.0	*0.0	*0.0	*0.0	*0.0	*0.0
Manufacturing	14.4	*3.5	17.9	5.7	*3.6	5.1
Electricity, gas and water supply	*0.5	*0.0	*0.5	*3.7	*0.0	*3.1
Construction	5.7	*0.5	6.2	4.1	*3.0	3.9
Wholesale trade	*3.4	*0.5	*4.0	*3.7	*1.2	*2.9
Retail trade	5.1	5.1	10.3	3.1	2.9	3.0
Accommodation, cafes and restaurants	*3.3	*1.8	5.1	*7.6	*3.7	5.5
Transport and storage	*1.6	*0.0	*1.6	*2.0	*0.0	*1.6
Communication services	*0.3	*0.6	*0.9	*1.1	*4.0	*2.1
Finance and insurance	*0.6	*0.9	*1.5	*1.7	*2.2	*1.9
Property and business services	5.5	*1.8	7.3	3.3	*1.4	2.5
Government administration and defence	*1.5	*0.8	*2.3	*5.1	*2.1	*3.4
Education	*0.3	*0.4	*0.7	*0.6	*0.4	*0.4
Health and community services	*0.3	*2.4	*2.7	*0.7	*1.7	*1.5
Cultural and recreational services	*0.6	*0.3	*0.9	*1.8	*1.0	*1.5
Personal and other services	*1.5	*0.6	*2.1	*3.3	*1.5	*2.5
Total (b)	48.7	21.7	70.4	3.8	2.2	3.1
Occupation						
Managers and administrators	*1.8	*0.6	*2.4	*1.4	*1.6	*1.5
Professionals	*2.9	*0.9	*3.8	*1.3	*0.4	*0.9
Associate professionals	*3.5	*1.2	4.6	*2.2	*1.3	1.9
Tradespersons and related workers	9.0	*0.9	9.9	3.3	*2.7	3.3
Advanced clerical and service workers	*0.0	*0.3	*0.3	*0.0	*0.4	*0.3
Intermediate clerical, sales and service workers	*3.7	6.7	10.4	*3.8	2.5	2.9
Intermediate production and transport workers	9.2	*1.1	10.3	5.1	*3.2	4.8
Elementary clerical, sales and service workers	*3.5	5.1	8.6	*4.4	3.4	3.8
Labourers and related workers	15.0	5.1	20.1	11.1	6.1	9.2
Total (b)	48.7	21.7	70.4	3.8	2.2	3.1
Not employed (b) in the past two years	47.8	43.8	91.6
Looking for first job	17.7	18.3	36.0
Other	30.1	25.4	55.6
Stood down	*2.0	*1.9	*3.9
Total	98.4	67.4	165.8	7.4	6.6	7.1

(a) From August 1996, occupation data are classified to the Australian Standard Classification of Occupations, Second Edition. See the Explanatory notes for details. (b) Full-time job for two weeks or more within the last two years.

**TABLE 16. UNEMPLOYED PERSONS BY DURATION OF UNEMPLOYMENT(a),
VICTORIA, AUGUST 1999**

<i>Particulars</i>	<i>Number ('000)</i>			<i>Percentage distribution</i>		
	<i>Males</i>	<i>Females</i>	<i>Persons</i>	<i>Males</i>	<i>Females</i>	<i>Persons</i>
Duration of unemployment (weeks) -						
Under 2	8.2	7.3	15.4	8.3	10.8	9.3
2 and under 4	8.0	6.4	14.4	8.2	9.5	8.7
4 and under 8	12.8	8.4	21.2	13.0	12.5	12.8
8 and under 13	6.1	7.3	13.5	6.2	10.9	8.1
13 and under 26	13.1	7.4	20.5	13.3	10.9	12.3
26 and under 52	16.2	13.1	29.3	16.5	19.5	17.7
52 and under 104	12.6	8.6	21.2	12.8	12.8	12.8
104 and over	21.4	8.9	30.3	21.7	13.2	18.2
Age (years) -						
15 - 19						
Under 13 weeks	10.6	6.3	17.0	10.8	9.4	10.2
13 weeks and under 52	*3.4	5.4	8.9	*3.5	8.1	5.4
52 weeks and over	*1.4	*1.5	*2.9	*1.5	*2.2	*1.7
Total aged 15 - 19	15.5	13.2	28.8	15.8	19.7	17.3
20 - 24						
Under 13 weeks	7.0	6.2	13.2	7.2	9.2	8.0
13 weeks and under 52	6.9	*2.9	9.8	7.0	*4.3	5.9
52 weeks and over	5.8	*2.6	8.5	5.9	*3.9	5.1
Total aged 20 - 24	19.8	11.7	31.5	20.1	17.4	19.0
25 and over						
Under 13 weeks	17.5	16.9	34.3	17.7	25.0	20.7
13 weeks and under 52	18.9	12.2	31.1	19.2	18.1	18.7
52 weeks and over	26.7	13.4	40.1	27.2	19.9	24.2
Total aged 25 and over	63.1	42.4	105.5	64.1	63.0	63.7
Total all ages	98.4	67.4	165.8	100.0	100.0	100.0
DURATION OF UNEMPLOYMENT (WEEKS)						
Average (mean) duration-						
Aged 15 - 19	17.9	21.4	19.5
Aged 20 - 24	51.8	29.1	43.3
Aged 25 and over	74.9	53.6	66.3
All ages	61.2	43.0	53.8
Median duration (b)-						
Aged 15 - 19	6.0	13.0	8.0
Aged 20 - 24	17.0	*9.0	16.0
Aged 25 and over	32.0	25.0	28.0
All ages	26.0	18.0	22.0

(a) Period from the time a person began looking for work, or was laid off to the end of the reference week. Periods of unemployment are recorded in complete weeks resulting in a slight understatement of duration of unemployment. (b) For information regarding the calculation of standard errors, refer to the technical notes in Labour Force, Australia (6203.0).

EXPLANATORY NOTES

INTRODUCTION	<p>This publication contains estimates of the civilian labour force derived from the Labour Force Survey component of the Monthly Population Survey. Estimates of the labour force characteristics of family members are also included.</p>
POPULATION SURVEY	<p>2 The population survey is based on a multi-stage area sample of private dwellings (currently about 30,000 houses, flats, etc.) and a list sample of non-private dwellings (hotels, motels, etc.), and covers about 0.5% of the population of Australia. The information is obtained from the occupants of selected dwellings by specially trained interviewers. The interviews are generally conducted during the two weeks beginning on the Monday between the 6th and 12th of each month. The information obtained relates to the week before the interview (i.e. the reference week). The ABS introduced the use of telephone interviewing into the Labour Force Survey over the period August 1996 to February 1997. Households selected for the Labour Force Survey are interviewed each month for eight months, with one eighth of the sample being replaced each month. The first interview is conducted face-to-face. Subsequent interviews are then conducted by telephone (if acceptable to the respondent).</p>
SCOPE	<p>3 The Labour Force Survey includes all persons aged 15 and over except:</p> <ul style="list-style-type: none">■ members of the permanent defence forces;■ certain diplomatic personnel of overseas governments, customarily excluded from census and estimated populations;■ overseas residents in Australia; and■ members of non-Australian defence forces (and their dependants) stationed in Australia.
COVERAGE	<p>4 In the Labour Force Survey, coverage rules are applied which aim to ensure that each person is associated with only one dwelling, and hence has only one chance of selection. The chance of a person being enumerated at two separate dwellings in the one survey is considered to be negligible. See paragraph 44 for information about the effect of the coverage rules on family statistics.</p> <p>5 Persons who are away from their usual residence for six weeks or less at the time of interview are enumerated at their usual residence (relevant information may be obtained from other usual residents present at the time of the survey).</p>
POPULATION BENCHMARKS	<p>6 Labour Force Survey estimates of persons employed, unemployed and not in the labour force are calculated in such a way as to add up to the independently estimated distribution of the usually resident population aged 15 and over by age and sex. This procedure compensates for under-enumeration in the survey, and leads to more reliable estimates. Persons who, at the time of interview, are overseas for more than six weeks but for less than 12 months are included in the independent population statistics (benchmarks) and are thus provided for in the calculation of the estimates. The benchmarks are the latest available estimates at the time the Labour Force Survey is conducted, but they usually differ from the official population estimates subsequently published in <i>Australian Demographic</i></p>

Statistics (Cat. no. 3101.0) because they are derived from incomplete information about population changes.

REVISION OF POPULATION BENCHMARKS

7 Survey estimates are not revised for the usually small amendments of population benchmarks arising from new data on deaths and overseas and internal migration. Revisions are made, however, after each Census of Population and Housing, and when population estimation bases are reviewed. These revisions affect original, seasonally adjusted and trend estimates. The last such revision was made in February 1999 to take account of the results of the 1996 Census of Population and Housing, which affected the monthly estimates from January 1995 to January 1999.

8 Population benchmarks used in the estimation of Labour Force Survey data are compiled according to place of usual residence. For an explanation of the conceptual basis of population estimates, see *Information Paper: Population Estimates: An Outline of The New Conceptual Basis of ABS Population Estimates* (Cat. no. 3216.0). Prior to October 1982, labour force estimates were based on a combination of place of enumeration and place of usual residence.

HISTORY OF THE SURVEY

9 National surveys were conducted in February, May, August and November each year from 1964 to February 1978. The survey has been conducted on a monthly basis since February 1978.

QUESTIONNAIRE CHANGES

10 The questionnaire used in the survey for the collection of labour force data has been revised from time to time. Details of these changes have been published in *Information Paper: Questionnaires Used in the Labour Force Survey* (Cat. no. 6232.0) in March 1978, December 1981, August 1984, June 1986, June 1991 and March 1993. The most recent change was in February 1998, to include reference to Centrelink.

INCLUSION OF CONTRIBUTING FAMILY WORKERS

11 In April 1986, the questionnaire was revised following the extension of the definition of employed persons to include persons who worked without pay between 1–14 hours per week in a family business or on a farm (i.e. contributing family workers). This definition aligned the Australian labour force concepts with the set of definitions adopted by the 13th International Conference of Labour Statisticians in October 1982.

12 Previously, contributing family workers who worked 1–14 hours, or who had such a job but were not at work, were defined as either unemployed or not in the labour force, depending on whether they were actively looking for work.

13 A revised procedure for weighting families estimates, was also introduced in April 1986.

COMPARABILITY OF SERIES

14 As noted in paragraph 7, estimates from January 1995 were revised to conform to revised population estimates following the 1996 Census of Population and Housing, and are thus not strictly comparable with estimates for periods prior to January 1995. An examination of the revised estimates showed that the effects on Labour Force Survey estimates for the period before January 1995 were inconsequential, and that no meaningful purpose would be served by publishing revised estimates for that period.

15 Comparability with estimates produced from the quarterly Survey of Employment and Earnings is affected by the use of a different survey methodology and definitions. The Labour Force Survey provides estimates of people in jobs whereas the Survey of Employment and Earnings provides an estimate of the number of jobs held by wage and salary earners. A more

detailed description of the differences between these two series is available on request.

SURVEY SAMPLE REDESIGN

16 Following each Population Census, the ABS reselects the Labour Force Survey sample to take into account the new information which is obtained from the Census. The sample that was used in the Labour Force Survey from September 1992 to August 1997 has been replaced by a new sample selected using information collected in the 1996 Census. The new sample was phased in over the period September 1997 to April 1998. For additional information, see *Information Paper: Labour Force Survey Sample Design, 1997* (Cat. no. 6269.0).

17 The sampling fractions for each State/Territory differ in order to yield reliable estimates of the main labour force aggregates for each State and Territory. The sampling fraction for Victoria changed from 1 in 242 to 1 in 257.

VICTORIAN REGIONS

18 In addition to the introduction of the new sampling fraction, the labour force dissemination regions were reviewed in order to maintain consistency with the Australian Standard Geographical Classification (ASGC), 1996.

19 More information on the changes to regional boundaries is available in the *Information Paper: Regional Labour Force Statistics, September 1997* (Cat. no. 6262.0). Details of the changes to LGA boundaries in Victoria are available in *Statistical Geography, Victoria* (Cat. no. 1103.2).

20 Detailed maps of the new Labour Force Dissemination Regions are presented at the end of this publication.

RELIABILITY OF THE ESTIMATES

21 Estimates in this publication are subject to two sources of error:

- sampling error: since the estimates are based on information obtained from occupants of a sample of dwellings they, and the movements derived from them, may differ from the figures that would have been produced if all dwellings had been included in the survey. One measure of the likely difference is given by the standard error of an estimate (see paragraphs 23 to 26); and
- non-sampling error: inaccuracies may occur because of imperfections in reporting by respondents and interviewers, and errors made in coding and processing data. These inaccuracies may occur in any enumeration, whether it be a full count or a sample. Every effort is made to reduce the non-sampling error to a minimum by careful design of questionnaires, intensive training and supervision of interviewers, and efficient operating procedures.

22 As the above problems are compounded when the statistics are disaggregated to regional data, users are particularly advised to treat month-to-month movements for regional data with caution. (See the following paragraphs for more detail on determining the reliability of month-to-month movements.)

STANDARD ERROR TABLES

23 To assist you in determining the reliability of the various estimates contained in this publication, tables of standard errors of level estimates and month-to-month movements are included on pages 34 and 35 respectively.

24 Use the table of standard errors of level estimates to determine the accuracy of most estimates contained in this publication. Use the tables of

month-to-month movements to determine the accuracy of estimates when comparing one month's figures with another. This is particularly important with month-to-month movements in determining *whether or not the estimates indicate that a significant change has occurred.*

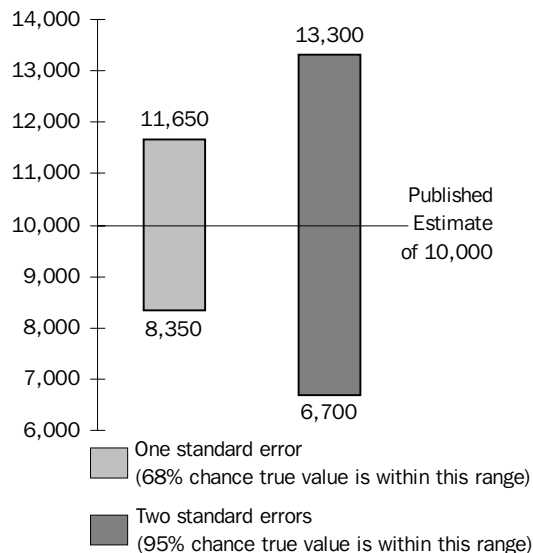
25 To use the tables, locate the figure in the *Size of estimate* column which is nearest in value to the estimate you wish to use. If you are comparing movements use the larger estimate. Read across the table until you find the column for the geographic area covered by the estimate concerned. This figure is one standard error.

26 There are approximately two chances in three that the true value which the estimate is attempting to measure is within plus or minus one standard error of the estimate. There are approximately nineteen chances in twenty that the true value is within plus or minus twice this amount.

27 A similar technique is used for month-to-month movements of estimates. After finding the standard error of the larger of the two estimates from the table of month-to-month movements of estimates (as in paragraph 25) compare the movement to one standard error; if the movement is larger then this indicates a likelihood that a change has occurred. If the movement is larger than two standard errors then this is a fairly reliable indicator of the change.

28 If comparing quarterly movements multiply the standard error by a factor of 1.04 before comparing it to the movement. If comparing six monthly movements multiply by a factor of 1.28 before making the comparison.

One standard error on a published estimate for Victoria is 1,650. The diagram shows the probable location of the true value which the estimate is attempting to measure.



29 Another useful measure of reliability is relative standard error (RSE). The relative standard error of an estimate is the amount by which an estimate is likely to vary (one standard error) as a percentage of its size.

30 To calculate the relative standard error of an estimate, divide one standard error of the estimate by the estimate and multiply by 100.

31 Estimates with a relative standard error of 10% or less can be regarded as statistically reliable enough for most uses. Estimates with a relative standard error of 25% or more should not be regarded as reliable and care should be exercised when using them. All such estimates in this publication have been marked with an asterisk (*).

32 For this survey this warning applies to estimates of 4,500 or less for Victoria. Different geographic areas have different points at which the 25% relative standard error cut off takes effect. These are listed in Table A.

DIFFERENCES BETWEEN CENSUS AND LABOUR FORCE SURVEY ESTIMATES

33 The results of the 1996 Census of Population and Housing show that labour force estimates derived from the Census differ from those derived from the Labour Force Survey.

34 The broad concepts underlying the measures of the labour force and its components, employment and unemployment, are similar in the census and the survey.

35 There are considerable differences in both the collection methodology adopted (including the detailed questions asked) and estimation procedures. Factors contributing to differences in estimates include under-enumeration in the Population Census for which census labour force estimates have not been adjusted, the use in the Labour Force Survey of population benchmarks derived from incomplete information about population change (see paragraph 6), the inclusion of permanent defence forces in census estimates, the personal interview approach adopted in the survey as opposed to self-enumeration of census schedules, differing questions used to determine labour force characteristics, and differing methods of adjustment for non-response to the survey or Census.

36 The Labour Force Survey provides detailed and up-to-date estimates of employment and unemployment for Australia, States and regions, whereas the Census of Population and Housing provides counts for small areas but in less detail than is available from the survey.

37 These considerations should be borne in mind when comparisons are made between Population Census and Labour Force Survey estimates.

SEASONAL ADJUSTMENT

38 Seasonally adjusted series are published in Table 2. Seasonal adjustment is a means of removing the estimated effects of normal seasonal variation from the series so that the effects of other influences on the series can be recognised more clearly. Seasonal adjustment does not remove the irregular or non-seasonal influences which may be present in any particular month. This means that month-to-month movements of the seasonally adjusted estimates may not be reliable indicators of trend behaviour. For example, irregular factors unrelated to the trend account for more than half the seasonally adjusted movement with the following frequency:

Employment: 5 in 10 monthly movements

Unemployment: 7 in 10 monthly movements

Unemployment rate: 7 in 10 monthly movements
Participation rate: 9 in 10 monthly movements

39 The seasonal factors for all seasonally adjusted series are reviewed annually to take account of each additional year's original data. The latest review, in February 1999, revised the Australian and State seasonally adjusted and trend monthly series back to February 1978. Information about the method of adjustment was published in the feature article of the February 1999 issue of *Labour Force, Australia* (Cat. no. 6203.0). Revised seasonally adjusted and trend estimates for all months for Australia and the States are available on request.

TREND ESTIMATION

40 Smoothing seasonally adjusted series produces a measure of trend by reducing the impact of the irregular component of the series. The monthly trend estimates are derived by applying a 13-term Henderson weighted moving average to all months except the last six. The last six monthly trend estimates are obtained by applying surrogates of the Henderson average to the seasonally adjusted series. These trend series are used to analyse the underlying behaviour of the series over time. Table 3 shows trend estimates for the past 15 months. Trend series graphs are shown on page 1. Data from February 1978 are available on the ABS on-line data dissemination service, PC-AUSSTATS.

41 While this smoothing technique enables estimates to be produced which include the latest month, it does result in revisions to the most recent months as additional observations become available. Generally, subsequent revisions become smaller, and after three months or two quarters have a negligible impact on the series. There will also be revisions as a result of the annual review of seasonal factors mentioned above in paragraph 39.

42 Users may wish to refer to the ABS publication *A Guide to Interpreting Time Series—Monitoring 'Trends', an Overview* (Cat. no. 1348.0) for further information about trend estimates.

LABOUR FORCE STATUS AND OTHER CHARACTERISTICS OF FAMILIES

43 As a part of survey procedures, family relationships are determined each month, enabling both the estimation of persons cross-classified by their relationship in the household and the estimation of families. In this publication, Table 5 shows the labour force status and relationship in the household of individuals. The new classification *Family type* and information on families rather than the household relationship of individuals is contained in *Labour Force, Australia* (Cat. no. 6203.0).

44 Because of the coverage rules, persons who usually live with other members of their family may, at the time of the survey, be enumerated as not living with all the usual members of their family. This situation is more likely for persons who are enumerated as visitors to other private dwellings or as persons staying in non-private dwellings (hotels, hospitals, etc.). The determination of family structure and family characteristics in such cases is difficult. Thus for survey questions used to determine family relationships, scope was further restricted to usual residents of private dwellings and the following persons were excluded:

- all persons enumerated in non-private dwellings (including hotels, motels, hospitals and other institutions); and
- persons enumerated as visitors to (rather than usual residents of) private dwellings

45 In addition, in those households where it was not possible to obtain information relating to all the usual residents, no family information was recorded. Thus persons living in households which include a member of the permanent defence forces, who is outside the scope of the population survey, are excluded from survey questions used to determine family relationships because family information could not be obtained from each usual resident. Similarly households which, at the time of the survey, have one or more of their usual residents away for more than six weeks, are excluded from the family survey. This also applies to households from which an incomplete or inadequate questionnaire was obtained for any usual resident in on scope and coverage. Generally, relationship in household is determined for more than 90% of all civilians aged 15 and over.

CHANGES IN FAMILIES CLASSIFICATIONS

46 The *Relationship in household* classification was introduced in the May 1994 issue of this publication to align with ABS standards. Most categories in this classification remain comparable with categories in the previous classification. The cases in which there are breaks in comparability are as follows:

47 *Relationship in household*. This classification was previously referred to as *Family status*.

- *Lone parents* (previously referred to as *Sole parents*) now includes parents with non-dependent children (provided those children are without a spouse or children of their own). These *Lone parents without dependants* are shown separately in Table 5.
- *Dependent students* (previously *Full-time students aged 15–24*) now comprise sons or daughters (of a couple or a lone parent) aged 15–19 attending school or aged 15–24 attending a tertiary educational institution full-time. Other related full-time students, who were also previously classified as *Full-time students aged 15–24* are now included in *Other family persons*.
- *Other family persons* now comprises the previous groups *Other family head*, excluding those now counted as *Lone parents*, the other related full-time students previously classified as *Full-time students aged 15–24* (see above) and *Other relative of married couple or family head*.

BIRTHPLACE

48 From April 1991, labour force birthplace data are aggregated according to major groups of the *Australian Standard Classification of Countries for Social Statistics (ASCCSS)* (Cat. no. 1269.0). The ASCCSS was developed by the ABS for use whenever demographic, labour and social statistics are classified by countries.

49 The ASCCSS major groups are based on the concept of geographic proximity. They differ from the country groups presented in this publication prior to April 1991. For example, African countries are now covered by 'The Middle East and North Africa' and 'Africa (excluding North Africa)', while Asia has been split into 'Southeast Asia', 'Northeast Asia' and 'Southern Asia'. Data for selected individual countries will continue to be available in this publication and comprehensively on microfiche.

INDUSTRY

50 From August 1994, Labour Force Survey industry data are classified according to the Australian and New Zealand Standard Industrial Classification (ANZSIC), a detailed description of which appears in *ANZSIC 1993* (Cat. no. 1292.0). Like the previous Australian Standard Industrial Classification (ASIC), ANZSIC classifies businesses according to their

economic activities, in a structure consisting of four levels (Division, Sub-division, Group and Class). Labour Force Survey data are coded at the Group level, as was the practice under ASIC. To enable the conversion of historical data from ASIC to ANZSIC for the period November 1984 to May 1994, a concordance was published in the August 1994 issue of *Labour Force, Australia* (Cat. no. 6203.0) and in the Information Paper: *Labour Force Survey: Introduction of ANZSIC for Industry data (Replacement publication)* (Cat. no. 6259.0). It has been found that the concordance, which was based on preliminary investigations, did not provide the most appropriate conversion for certain Group level industries. An improved concordance has now been applied to historical Labour Force Survey estimates. This concordance was published in the Appendix to the May 1996 issue of *Labour Force, Australia* (Cat. no. 6203.0) and in a further issue of the above Information Paper.

STATUS IN EMPLOYMENT

51 From August 1994, the Labour Force Survey has adopted the International Classification of *Status in employment* (ICSE-93) in place of the previous term *Status of worker*. No definitional changes have been made, the only changes are to the classification titles which are as follows: Employer remains Employer, Wage and salary earner becomes Employee, Self-employed becomes Own account worker and Unpaid family helper becomes Contributing family worker.

OCCUPATION

52 From August 1996, Labour Force Survey occupation data are classified according to the Australian Standard Classification of Occupations (ASCO) Second Edition, a detailed description of which appears in *ASCO – Australian Standard Classification of Occupations, Second Edition* (Cat. no. 1220.0). The new version of the classification replaces ASCO First Edition, which was adopted in the survey in August 1986. Like the previous ASCO First Edition, ASCO Second Edition is a skill-based classification of occupations. However, the structure of ASCO Second Edition comprises five hierarchical levels (Major Group, Sub-Major Group, Minor Group, Unit Group and Occupation) compared with four levels in ASCO First Edition (Major Group, Minor Group, Unit Group and Occupation). Labour Force Survey data are coded to the Unit Group level, as was the practice under ASCO First Edition.

RELATED PUBLICATIONS

53 Users may also wish to refer to the following publications which relate to the labour force and are available on request:

Labour Statistics, Australia (Cat. no. 6101.0) (annual)

A Guide to Labour Statistics, Australia (Cat. no. 6102.0) (irregular)

Labour Force, New South Wales (Cat. no. 6201.1) (quarterly)

Labour Force, Queensland (Cat. no. 6201.3) (quarterly)

Labour Force, Australia, Preliminary (Cat. no. 6202.0) (monthly)

Labour Force, Australia (Cat. no. 6203.0) (monthly)

Labour Force, Australia, 1978–1995 (Cat. no. 6204.0) (irregular)

Labour Force Projections, Australia (Cat. no. 6260.0) (irregular)

Information Papers

Questionnaires Used in the Labour Force Survey (Cat. no. 6232.0) (irregular)

Regional Labour Force Statistics (Cat. no. 6262.0) (irregular)

Labour Force Survey Sample Design (Cat. no. 6269.0) (irregular)

Measuring Employment and Unemployment (Cat. no. 6279.0) (irregular)

54 Current publications produced by the ABS are listed in the *Catalogue of Publications and Products, Australia* (Cat. no. 1101.0). The ABS also issues, on Tuesdays and Fridays, a *Release Advice* (Cat. no. 1105.0) which lists publications to be released in the next few days. The Catalogue and Release Advice are available from any ABS office.

UNPUBLISHED STATISTICS

55 The ABS can also make available information which is not published. This information is available on a number of media such as floppy disk and customised reports. In general, a charge is made for providing unpublished information. Inquiries should be made to any ABS office.

ROUNDING

56 Estimates have been rounded and discrepancies may occur between sums of the component items and totals.

SYMBOLS AND OTHER
USAGES

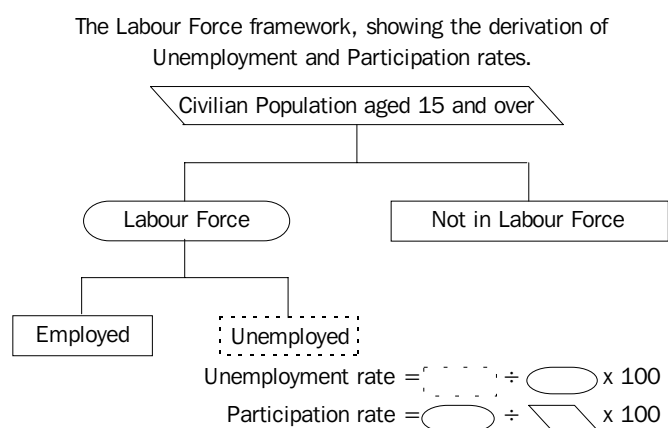
.. not applicable
* subject to sampling variability too high for most practical uses. See paragraphs 31 and 32.

Zia Abbasi
Regional Director

GLOSSARY

Dependants	All family members under 15 years of age; all family members aged 15–19 attending school or aged 15–24 attending a tertiary educational institution full-time (except those classified as husbands, wives or lone parents).
Dependent student	In couple or one-parent families, sons or daughters aged 15–19 attending school or aged 15–24 attending a tertiary educational institution full-time (except those classified as husbands, wives or lone parents).
Employed	Persons aged 15 years and over who, during the reference week: <ul style="list-style-type: none">■ worked for one hour or more for pay, profit, commission, or payment in kind in a job or business, or on a farm (comprising employees, employers, and own account workers); or■ worked for one hour or more without pay in a family business or on a farm (i.e. contributing family worker); or■ were employees who had a job but were not at work and were: on paid leave; on leave without pay for less than four weeks up to the end of the reference week; stood down without pay because of bad weather or plant breakdown at their place of employment for less than four weeks up to the end of the reference week; on strike or locked out; on workers' compensation and expected to be returning to their job; or receiving wages or salary while undertaking full-time study; or■ were employers, own account workers or contributing family workers who had a job, business, or farm, but were not at work.
Full-time workers	Employed persons who usually worked 35 hours or more a week (in all jobs) and others who, although usually working less than 35 hours a week, worked 35 hours or more during the reference week.
Household	A group of one or more persons in a private dwelling who consider themselves to be separate from other persons (if any) in the dwelling, and who make regular provision to take meals separately from other persons, i.e. at different times or in different rooms. Lodgers who receive accommodation but not meals are treated as separate households. Boarders who receive both accommodation and meals are not treated as separate households. A household may consist of any number of families and non-family members.
Industry	From August 1994, classified to the <i>Australian and New Zealand Standard Industrial Classification (ANZSIC), 1993 (1292.0)</i> .
Labour force	For any group, persons who were employed or unemployed, as defined.
Lone parent	The head of a one-parent family.
Lone person	A person who is the sole member of a household.
Marital status	Persons are classified as married (husband and wife) if they are reported as being married (including de facto) and their spouse was a usual resident of the household at the time of the survey. The not-married category comprises persons who have never married, or are separated, widowed or divorced as well as those who although reported as being married, did not have a spouse who usually lived in the household.

Non-dependent child	In couple or one-parent families, sons or daughters aged 15 and over, other than those classified as dependent students, husbands, wives or lone parents).
Non-family member	A person who is not related to any other member of the household in which they are living.
Not in the labour force	Persons who were not in the categories employed or unemployed, as defined.
Occupation	From August 1996, classified according to the <i>Australian Standard Classification of Occupations (ASCO) Second Edition</i> (1220.0).
Participation rate	For any group, the labour force expressed as a percentage of the civilian population aged 15 years and over in the same group.
Part-time workers	Employed persons who usually worked less than 35 hours a week and who did so during the reference week.
Status in employment	Employed persons classified by whether they were Employers, Own account workers, Employees, or Contributing family workers.
Unemployed	Persons aged 15 years and over who were not employed during the reference week, and: <ul style="list-style-type: none"> ■ had actively looked for full-time or part-time work at any time in the four weeks up to the end of the reference week and: ■ were available for work in the reference week, or would have been available except for temporary illness (i.e. lasting for less than four weeks to the end of the reference week); or ■ were waiting to start a new job within four weeks from the end of the reference week and would have started in the reference week if the job had been available then; or ■ were waiting to be called back to a full-time or part-time job from which they had been stood down without pay for less than four weeks up to the end of the reference week (including the whole of the reference week) for reasons other than bad weather or plant breakdown.
Unemployment rate	For any group, the number of unemployed persons expressed as a percentage of the labour force in the same group.



A

STANDARD ERRORS OF ESTIMATES, FROM SEPTEMBER 1997(a)

Size of estimate	Outer Western Melbourne	North Western Melbourne	Inner Melbourne	North Eastern Melbourne	Inner Eastern Melbourne	Southern Melbourne	Outer Eastern Melbourne	South Eastern Melbourne	Mornington Peninsula
300	210	230	220	210	210	200	210	230	200
500	280	300	290	270	280	260	280	310	270
700	340	360	350	330	340	310	340	370	330
1 000	410	440	420	400	410	380	410	450	400
1 500	520	550	530	500	520	480	520	560	490
2 000	600	650	620	580	600	560	600	650	580
2 500	680	730	700	660	680	630	680	740	650
3 000	750	800	770	730	750	690	750	820	720
3 500	820	870	840	790	820	760	820	890	780
4 000	880	940	900	850	880	810	880	950	840
5 000	990	1 060	1 020	960	990	920	990	1 080	950
7 000	1 190	1 270	1 220	1 150	1 190	1 100	1 190	1 290	1 140
10 000	1 440	1 540	1 480	1 390	1 450	1 330	1 440	1 570	1 380
15 000	1 800	1 920	1 850	1 730	1 800	1 660	1 800	1 950	1 720
20 000	2 100	2 240	2 160	2 030	2 100	1 940	2 100	2 280	2 010
30 000	2 610	2 790	2 680	2 520	2 610	2 410	2 610	2 830	2 500
40 000	3 040	3 260	3 130	2 940	3 050	2 810	3 040	3 300	2 920
50 000	3 430	3 670	3 530	3 310	3 440	3 170	3 430	3 720	3 290
100 000	4 970	5 320	5 110	4 800	4 980	4 590	4 970	5 390	4 770
150 000	6 170	6 600	6 350	5 960	6 180	5 700	6 170	6 690	5 920
200 000	7 190	7 700	7 400	6 940	7 210	6 650	7 190	7 800	6 900
300 000	8 920	9 550	9 170	8 620	8 940	8 240	8 920	9 680	8 560
500 000	11 690	12 520	12 030	11 300	11 720	10 810	11 700	12 690	11 220
25% RSE	3 000	3 500	3 200	2 800	3 000	2 500	3 000	3 600	2 700

Size of estimate	Melbourne Major SR	Barwon-Western District	Central Highlands-Wimmera	Loddon-Mallee	Goulburn-Ovens-Murray	All Gippsland	Balance of Victoria SR	Victoria
300	310	240	250	260	260	240	360	230
500	410	320	340	350	340	320	440	320
700	480	390	400	420	410	390	510	390
1 000	570	470	490	510	490	470	590	490
1 500	690	590	610	630	620	590	700	620
2 000	790	690	720	740	720	690	780	740
2 500	870	780	810	830	810	770	860	850
3 000	950	860	890	920	900	860	930	900
3 500	1 020	940	970	1 000	980	930	990	1 000
4 000	1 080	1 010	1 050	1 080	1 050	1 000	1 040	1 050
5 000	1 190	1 140	1 180	1 220	1 190	1 130	1 150	1 200
7 000	1 380	1 360	1 420	1 460	1 420	1 350	1 320	1 400
10 000	1 610	1 650	1 720	1 770	1 730	1 640	1 520	1 650
15 000	1 900	2 060	2 140	2 200	2 150	2 040	1 800	1 950
20 000	2 140	2 400	2 500	2 570	2 510	2 390	2 020	2 200
30 000	2 530	2 990	3 100	3 200	3 120	2 970	2 390	2 600
40 000	2 830	3 490	3 620	3 730	3 640	3 470	2 690	2 900
50 000	3 090	3 930	4 080	4 200	4 100	3 910	2 940	3 100
100 000	4 020	5 690	5 920	6 090	5 940	5 660	3 900	3 900
150 000	4 660	7 070	7 350	7 560	7 380	7 020	4 600	4 550
200 000	5 170	8 240	8 560	8 810	8 600	8 190	5 170	5 100
300 000	5 960	10 220	10 620	10 930	10 670	10 160	6 100	6 050
500 000	7 090	13 390	13 930	14 340	13 980	13 320	7 500	7 550
1 000 000	8 890						9 910	10 600
2 000 000	11 020						13 090	15 400
5 000 000	14 400							26 500
25%RSE	4 600	4 100	4 400	4 700	4 500	4 000	4 300	4 500

(a) For standard errors for earlier periods, see previous issues of this publication.

B

STANDARD ERRORS OF ESTIMATES OF MONTHLY MOVEMENTS, FOR OCTOBER TO NOVEMBER 1997 ONWARDS(a)

Size of larger estimate	Outer	North		North	Inner		Outer	Eastern	South Eastern	Mornington
	Western Melbourne	Western Melbourne	Inner Melbourne	Eastern Melbourne	Eastern Melbourne	Southern Melbourne	Melbourne	Melbourne	Melbourne	Peninsula
300	180	170	180	190	180	190	180	180	180	160
500	230	220	230	240	230	240	230	230	230	210
700	260	250	270	280	270	280	260	260	260	240
1 000	310	300	310	340	320	330	310	310	310	290
1 500	380	360	380	400	380	400	380	380	380	350
2 000	430	410	430	460	440	450	430	430	430	400
2 500	480	460	480	510	490	500	480	480	480	440
3 000	520	500	520	560	530	550	520	520	520	480
3 500	560	540	560	600	570	590	560	560	560	510
4 000	590	570	600	640	610	630	590	590	590	550
5 000	660	630	660	710	670	690	660	660	660	610
7 000	770	740	780	830	790	810	770	770	770	710
10 000	900	900	900	1 000	950	950	900	900	900	850
15 000	1 100	1 050	1 100	1 200	1 100	1 150	1 100	1 100	1 100	1 000
20 000	1 250	1 200	1 250	1 350	1 300	1 300	1 250	1 250	1 250	1 150
30 000	1 500	1 450	1 500	1 600	1 550	1 600	1 500	1 500	1 500	1 400
40 000	1 750	1 650	1 750	1 850	1 750	1 800	1 750	1 750	1 750	1 600
50 000	1 900	1 850	1 950	2 050	1 950	2 000	1 900	1 900	1 900	1 750
100 000	2 650	2 550	2 650	2 850	2 700	2 800	2 650	2 650	2 650	2 450
150 000	3 200	3 100	3 200	3 450	3 250	3 350	3 200	3 200	3 200	2 950
200 000	3 650	3 500	3 700	3 900	3 750	3 850	3 650	3 650	3 650	3 350
300 000	4 400	4 250	4 450	4 750	4 500	4 650	4 400	4 400	4 400	4 050
500 000	5 550	5 400	5 600	6 000	5 700	5 900	5 600	5 600	5 600	5 150

Size of larger estimate	Melbourne	Barwon-	Central	Loddon-	Goulburn-		Balance of	
	Major SR	Western District	Highlands-Wimmera	Mallee	Ovens-Murray	All Gippsland	Victoria SR	Victoria
300	470	200	200	210	210	200	390	400
500	550	250	250	260	270	250	460	480
700	610	300	290	310	310	290	520	530
1 000	680	350	340	360	370	340	580	600
1 500	780	420	420	440	440	420	660	690
2 000	850	480	470	500	500	470	720	760
2 500	910	540	530	550	560	530	770	820
3 000	970	580	570	600	610	570	820	880
3 500	1 020	630	620	650	650	620	860	920
4 000	1 060	670	650	690	700	660	890	970
5 000	1 140	740	730	760	770	730	960	1 040
7 000	1 270	870	850	890	900	850	1 060	1 170
10 000	1 400	1 000	1 000	1 050	1 050	1 000	1 200	1 320
15 000	1 600	1 250	1 200	1 250	1 300	1 200	1 350	1 520
20 000	1 750	1 400	1 400	1 450	1 450	1 400	1 500	1 670
30 000	2 000	1 700	1 650	1 750	1 750	1 650	1 700	1 920
40 000	2 200	1 950	1 900	2 000	2 050	1 900	1 850	2 120
50 000	2 350	2 150	2 100	2 200	2 250	2 100	2 000	2 290
70 000	2 650	2 500	2 450	2 600	2 650	2 450	2 200	2 560
100 000	2 950	3 000	2 900	3 050	3 100	2 900	2 450	2 890
150 000	3 350	3 600	3 500	3 700	3 750	3 500	2 800	3 320
200 000	3 650	4 100	4 000	4 200	4 300	4 050	3 050	3 670
300 000	4 200	4 950	4 850	5 100	5 150	4 850	3 450	4 210
500 000	4 900	6 300	6 150	6 450	6 550	6 150	4 100	5 010
1 000 000	6 100						5 100	6 340
2 000 000	7 650						6 300	8 030
5 000 000	10 200							10 970

(a) For standard errors for earlier periods, see previous issues of this publication.

C

25% RELATIVE STANDARD ERROR CUTOFF LEVELS, STATES AND AUSTRALIA, FROM SEPTEMBER 1997(a)

	<i>Person estimates</i>	<i>Hours worked</i>	<i>Average hours worked</i>	<i>Average duration of unemployment</i>	<i>Median duration of unemployment</i>
New South Wales	5 900	10 600	4 600	10 400	16 800
Victoria	4 500	8 200	3 800	9 600	12 700
Queensland	4 100	7 200	3 700	7 300	10 800
South Australia	2 400	4 000	2 000	4 100	6 000
Western Australia	2 800	4 800	2 400	5 000	7 200
Tasmania	1 100	1 800	800	1 800	2 800
Northern Territory	1 000	1 500	700	1 100	2 500
Australian Capital Territory	1 100	1 800	1 000	1 900	2 600
Australia	4 400	8 700	3 500	10 400	14 300
Standard error factor	..	1.4	0.9	1.5	1.7

(a) For standard errors for earlier periods, see previous issues of this publication.

NOTE: Relative Standard Errors (RSE) of *Hours worked*, *Average hours worked*, *Average duration of unemployment* and *Median duration of unemployment* are obtained by first finding the relative standard error of the total number of persons contributing to the estimate (from Table A) and then multiplying that figure by the listed standard error factor.

SUPPLEMENTARY AND SPECIAL SURVEYS

The supplementary and special surveys collect data on particular aspects of the labour force. The following is an historical list of supplementary and special labour force surveys. The data are available in publication form, by subscription or on request. It may be possible to order unpublished data on the following supplementary and special surveys by contacting the ABS.

<i>Title of Survey</i>	<i>Catalogue No./ Product No.</i>
Career Experience, Australia. Irregular. Latest issue November 1998	6254.0
Career Paths of Persons with Trade Qualifications, Australia. Irregular. Latest issue 1993	6243.0
Child Care, Australia. Irregular. Latest issue March 1996	4402.0
Education and Training Experience, Australia. Irregular. Latest issue 1997	6278.0
Employee Earnings, Benefits and Trade Union Membership, Australia. Annual. Latest issue August 1998	6310.0
Job Search Experience of Unemployed Persons, Australia. Annual. Latest issue July 1998	6222.0
Labour Force Experience, Australia. Two-yearly. Latest issue February 1999	6206.0
Labour Force Status and Educational Attainment, Australia. Final issue February 1994	6235.0
Labour Force Status and Other Characteristics of Families, Australia. Annual. Latest issue June 1998	6224.0
Labour Force Status and Other Characteristics of Migrants, Australia. Irregular. Latest issue November 1996	6250.0
Labour Mobility, Australia. Two-yearly. Latest issue February 1998	6209.0
Multiple Jobholding, Australia. Irregular. Latest issue August 1997	6216.0
Participation in Education, Australia. Annual. Latest issue September 1998	6272.0
Persons Employed at Home, Australia. Irregular. Latest issue September 1995	6275.0
Persons Not in the Labour Force, Australia. Annual. Latest issue September 1998	6220.0
Persons Who Had Re-entered the Labour Force, Australia. Irregular. Latest issue July 1995	6264.0.40.001
Persons Who Have Left the Labour Force, Australia. Irregular. Latest issue September 1994	6267.0.40.001
Retirement and Retirement Intentions, Australia. Irregular. Latest issue November 1997	6238.0
Successful and Unsuccessful Job Search Experience, Australia. Two-yearly. Latest issue July 1998	6245.0
Superannuation, Australia. Irregular. Latest issue November 1995	6319.0
Transition from Education to Work, Australia. Annual. Latest issue May 1998	6227.0
Underemployed Workers, Australia. Annual. Latest issue September 1998	6265.0
Working Arrangements, Australia. Irregular. Latest issue August 1997	6342.0

LOCAL GOVERNMENT AREA (LGA) COMPOSITION OF STATISTICAL REGIONS, VICTORIA, FROM SEPTEMBER 1997

Melbourne Major Statistical Region

Outer Western Melbourne SR

Brimbank (C)
Hobsons Bay (C)
Maribyrnong (C)
Melton (S)
Moonee Valley (C)
Wyndham (C)

North Western Melbourne SR

Hume(C)
Moreland (C)

Inner Melbourne SR

Melbourne (C)
Port Phillip (C)
Stonnington (C) - Prahran (SLA)
Yarra (C)

North Eastern Melbourne SR

Banyule (C)
Darebin (C)
Nillumbik (S)
Whittlesea (C)

Inner Eastern Melbourne SR

Boroondara (C)
Manningham (C)
Monash (C)
Whitehorse (C)

Southern Melbourne SR

Bayside (C)
Glen Eira (C)
Kingston (C)
Stonnington (C) - Malvern (SLA)

Outer Eastern Melbourne SR

Knox (C)
Maroondah (C)
Yarra Ranges (S) - Part A (SSD)

South Eastern Melbourne SR

Cardinia (S)
Casey (C)
Greater Dandenong (C)

Mornington Peninsula SR

Frankston (C)
Mornington Peninsula (S)

(B) Borough
(C) City
(RC) Rural City
(S) Shire
(SLA) Statistical Local Area
(SSD) Statistical Sub-Division

Balance of Victoria Major Statistical Region

Barwon-Western District SR

Colac-Otway (S)
Corangamite (S)
Glenelg (S)
Golden Plains (S)
Greater Geelong (C)
Moynes (S)
Queenscliffe (B)
Southern Grampians (S)
Surf Coast (S)
Warrnambool (C)
Lady Julia Percy Island

Central Highlands -Wimmera SR

Ararat (RC)
Ballarat (C)
Hepburn (S)
Hindmarsh (S)
Horsham (RC)
Moorabool (S)
Northern Grampians (S)
Pyrenees (S)
West Wimmera (S)
Yarriambiack (S)

Loddon-Mallee SR

Buloke (S)
Central Goldfields (S)
Gannawarra (S)
Greater Bendigo (C)
Loddon (S)
Macedon Ranges (S)
Mildura (RC)
Mount Alexander (S)
Swan Hill (RC)

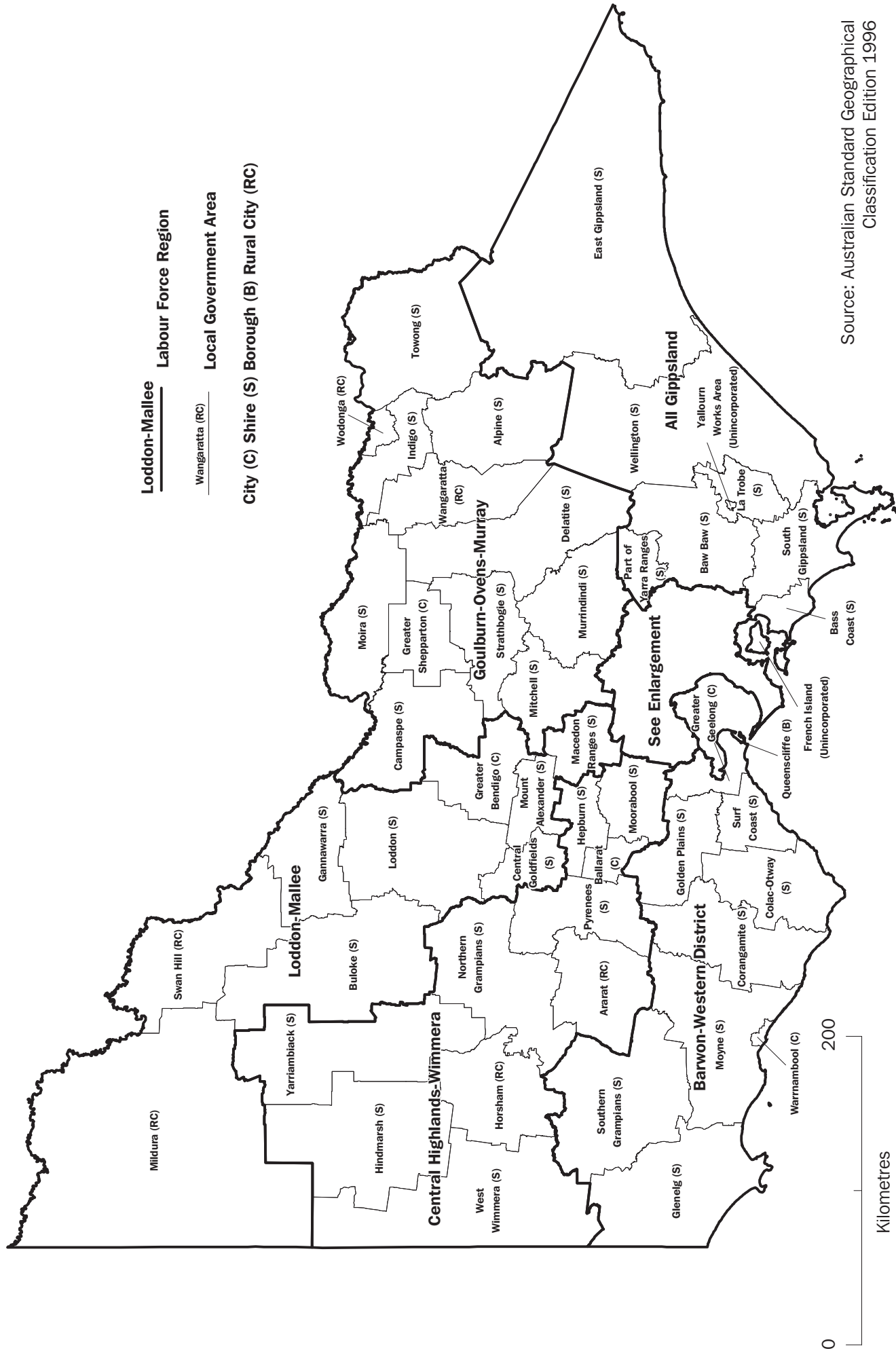
Goulburn-Ovens-Murray SR

Alpine (S)
Campaspe (S)
Delatite (S)
Greater Shepparton (C)
Indigo (S)
Mitchell (S)
Moir (S)
Murrindindi (S)
Strathbogie (S)
Towong (S)
Wangaratta (RC)
Wodonga (RC)

All Gippsland SR

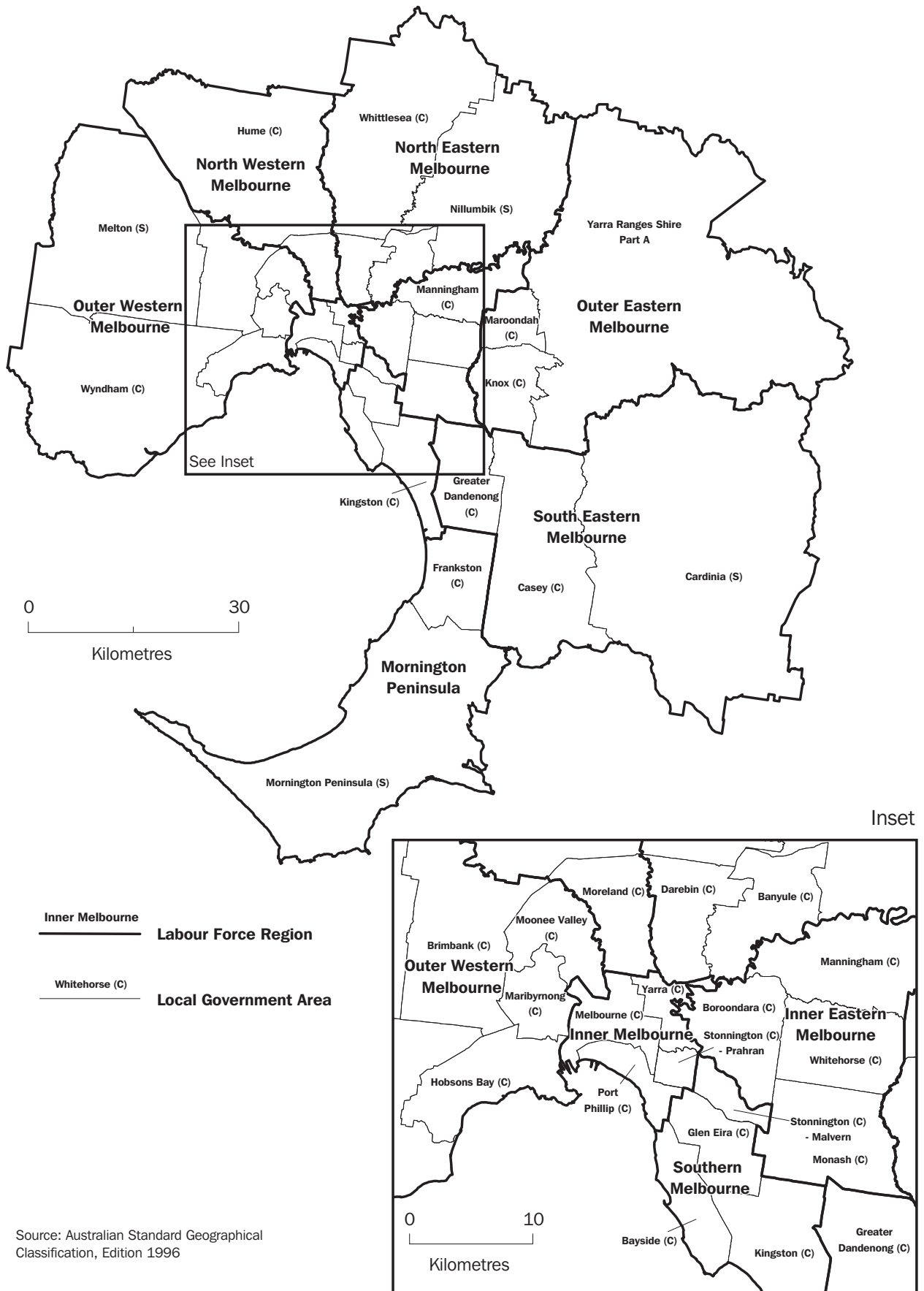
Bass Coast (S)
Baw Baw (S)
East Gippsland (S)
La Trobe (S)
South Gippsland (S)
Wellington (S)
Yarra Ranges (S) - Part B (SLA)
Yallourn Works Area
Bass Strait Islands
French Island
Off Shore Areas & Migratory

Victoria — Labour Force Regions and Local Government Areas, September 1997



Source: Australian Standard Geographical Classification Edition 1996

Melbourne Major Statistical Region and Local Government Areas, September 1997



Source: Australian Standard Geographical Classification, Edition 1996

SELF-HELP ACCESS TO STATISTICS

- CPI INFOLINE* For current and historical Consumer Price Index data, call 1902 981 074 (call cost 75c per minute).
- DIAL-A-STATISTIC* For the latest figures for National Accounts, Balance of Payments, Labour Force, Average Weekly Earnings, Estimated Resident Population and the Consumer Price Index call 1900 986 400 (call cost 75c per minute).
- INTERNET* www.abs.gov.au
- LIBRARY* A range of ABS publications is available from public and tertiary libraries Australia-wide. Contact your nearest library to determine whether it has the ABS statistics you require.

WHY NOT SUBSCRIBE?

- PHONE* +61 1300 366 323
- FAX* +61 3 9615 7848

CONSULTANCY SERVICES

ABS offers consultancy services on a user pays basis to help you access published and unpublished data. Data that is already published and can be provided within 5 minutes is free of charge. Statistical methodological services are also available. Please contact:

<i>INQUIRIES</i>	<i>City</i>	<i>By phone</i>	<i>By fax</i>
	Canberra	02 6252 6627	02 6207 0282
	Sydney	02 9268 4611	02 9268 4668
	Melbourne	03 9615 7755	03 9615 7798
	Brisbane	07 3222 6351	07 3222 6283
	Perth	08 9360 5140	08 9360 5955
	Adelaide	08 8237 7400	08 8237 7566
	Hobart	03 6222 5800	03 6222 5995
	Darwin	08 8943 2111	08 8981 1218

POST Client Services, ABS, PO Box 10, Belconnen ACT 2616

EMAIL client.services@abs.gov.au



2620220008990
ISSN 1030-536X

RRP \$18.50